

Finance Committee Agenda
Jefferson County
Jefferson County Courthouse
311 S. Center Avenue, Room 205
Jefferson, WI 53549

Date: Thursday August 13, 2020

Time: 8:30 a.m.

Committee members: Jones, Richard (Chair); Kutz, Russell (Secretary); Rinard, Amy; Jaeckel, George (Vice Chair);
Nelán, Conor

1. Call to order
2. Roll call (establish a quorum)
3. Certification of compliance with the Open Meetings Law
4. Approval of the agenda
5. Approval of Finance Committee minutes for July 9, 2020
6. Communications
7. Public comment (Members of the public who wish to address the Committee on specific agenda items must register their request at this time)
8. Discussion on investment portfolio and strategy – DANA Investment Advisors
9. Discussion and possible action on claims against Jefferson County
10. Discussion and possible action on awarding contract for Edge Consulting
11. Discussion and possible action on 2021 budget update
12. Discussion and possible action on CARES funds update
13. Discussion and possible action on determining disposition of foreclosed properties, setting minimum bids for the sale of foreclosed properties and considering offers to purchase on foreclosed properties
14. Convene in closed session pursuant to section 19.85 (1)(e) Wis. Stats. for deliberating or negotiating the purchase of public properties, the investing of public funds, or conducting other specified public business, whenever competitive or bargaining reasons require a closed session, for the purpose of discussion and possible action on setting minimum bids, selling and considering offers to purchase on tax foreclosed properties and other county owned properties and pursuant to section 19.85 (1)(g) Wis. Stats. to confer with legal counsel concerning strategy to be adopted by Jefferson County with respect to litigation in which it is or is likely to become involved for the purpose of discussion and possible action on claims against Jefferson County
15. Reconvene in open session for action on closed session items if necessary
16. Discussion and possible action on 2020 projections of budget vs. actual revenues and expenditures
17. Review of the financial statements and department update for June 2020-Finance Department
18. Review of the financial statements and department update for June 2020-Treasurer's Office
19. Review of the financial statements and department update for June 2020-Child Support Department
20. Update on contingency fund balance
21. Discussion of funding for projects related to the new highway facilities and sale of old highway facilities
22. Set future meeting schedule, next meeting date, and possible agenda items
23. Review of invoices
24. Adjourn

Next scheduled meetings: Monday, September 14, 2020 (Budget Hearings)
 Wednesday, September 16, 2020 (Budget Hearings)
 Thursday, September 17, 2020 (Budget Hearings)
 Friday, September 18, 2020 (Budget Hearings and Regular Meeting)
 Thursday, October 8, 2020 (Regular Meeting)
 Thursday, November 5, 2020 (Regular Meeting)

A Quorum of any Jefferson County Committee, Board, Commission or other body, including the Jefferson County Board of Supervisors, may be present at this meeting.

Individuals requiring special accommodations for attendance at the meeting should contact the County Administrator 24 hours prior to the meeting at 920-674-7101 so appropriate arrangements can be made.

**Jefferson County
Finance Committee Minutes
July 9, 2020**

Committee members: Jones, Richard (Chair) Kutz, Russell (Secretary)
Rinard, Amy Nelan, Conor
Jaeckel, George (Vice Chair)

1. **Call to order** – Finance Committee Chair Richard Jones called the meeting to order at 8:30 a.m.
2. **Roll call (establish a quorum)** – Finance Committee members present were Richard Jones, George Jaeckel, Russell Kutz, Conor Nelan and Amy Rinard. Other board members present were Mary Roberts and Walt Christensen. Staff in attendance were County Administrator, Ben Wehmeier; Finance Director, Marc DeVries; Assistant Finance Director, Tammy Worzalla; Financial Systems Specialist Cindy Diestelmann; Human Services Director Kathi Cauley, and Paralegal Sarana Stolar. There were no members of the public present.
3. **Certification of compliance with the Open Meetings Law** – County Administrator Wehmeier certified compliance with the Open Meetings Law.
4. **Approval of the agenda** – The agenda was approved.
5. **Approval of Finance Committee minutes for June 9, 2020** - A motion was made by Jaeckel/Nelan to approve the minutes for June 9, 2020. The motion passed 5-0.
6. **Communications** – None.
7. **Public Comment** – None.
8. **Discussion and possible action on Proclaiming the Month of August as Child Support Awareness Month** – A proclamation declaring August as Child Support Month has been prepared for the Board of Supervisors to act on. A motion was made by Jaeckel/Rinard to recommend the proclamation to the County Board of Supervisors. The motion passed 5-0.
9. **Discussion and possible action on Accepting the Parents as Teachers grant funding through Greater Watertown Community Health Foundation at the Human Services Department** – Human Services Director Kathi Cauley explained that the County was awarded a grant from the Greater Watertown Community Health Foundation to purchase Parents as Teachers online curriculum for the Birth to Three program. Motion by Nelan/Kutz to approve the resolution accepting the grant award and recommend approval of this resolution to the Board of Supervisors. The motion passed 5-0.
10. **Discussion and possible action on awarding bids for South Campus Improvement Projects** - Wehmeier explained that due to the COVID-19 pandemic, it was anticipated that bonding for the Courthouse/Sheriff/Jail complex previously planned for later in 2020 would not be likely. Therefore, prior to soliciting bids, the projects previously proposed for the South Campus were reprioritized so that some bond funding could remain for necessary improvements to the Courthouse/Sheriff/Jail complex. The County worked with Maas Brothers Construction and Struc

Rite Engineering to assess the priorities. Subsequently, request for bids were let in June and received, opened, and evaluated. The vendors recommended were all the lowest responsible bidders. All of the projects were within the estimated budget with the exception of the site utility project which presented some previously unforeseen challenges. Maas Brothers has worked with the proposed bidder to value engineer the project and currently we estimate a savings of approximately \$100,000 from the bid price, however, Administration and Finance are seeking approval for the full bid amount as contingency for the project. When also factoring in construction management costs and reimbursement from WIC for part of the construction the overall project budget is exceeded by approximately \$16,000 which management feels is acceptable. Motion by Jaeckel/Nelan to approve the resolution awarding all bids for the South Campus Improvement Projects to the lowest responsible bidders and forwarding the resolution to the July Board of Supervisors meeting. The motion passed 5-0.

- 11. Discussion and possible action on Temporarily Amending the Jefferson County Purchasing Ordinance** – Wehmeier and DeVries explained that The State of Wisconsin has designated \$1,375,046 of CARES Act funding under its Routes to Recovery program for Jefferson County to respond to the COVID-19 pandemic. Due to the overwhelming need for goods and services relative to COVID-19, lead time for procuring such goods and services has extended, making it necessary for the County to continue to have an option for emergency procurements as allowed by Section 5 (5) of the County’s Purchasing Ordinance. This is of particular importance as Jefferson County considers the need to re-open its facilities to members of the public and staff as safely as possible. This resolution temporarily amends the Jefferson County Purchasing Ordinance by authorizing the Purchasing Agent (County Administrator) to continue emergency procurements through December 31, 2020 for goods or services related to Jefferson County’s response to the COVID-19 pandemic. Motion by Rinard/Jaeckel to approve the resolution that temporarily amends the Jefferson County Purchasing Ordinance and forward to the Board of Supervisors for action. The motion passed 5-0.
- 12. Discussion and possible action on reinstating the foreclosure on property tax delinquent properties under Jefferson County’s Real Estate Tax Foreclosure Policy** – DeVries explained that the Finance Committee had voted on a measure to suspend foreclosures on tax delinquent properties to be consistent with State action taken. The period for such state action expired July 1, 2020. In order to be consistent with State action, DeVries is recommending to reinstate the policy on foreclosures on tax delinquent properties. Motion made by Jones/Jaeckel to reinstate the foreclosure process on tax delinquent properties, with the exception of the property owned by Mr. Knipfer who is currently working with the Veterans Services office to obtain relief that would satisfy his tax obligation. The motion passed 5-0.
- 13. Discussion on 2021 budget guidance** – Wehmeier explained that he had recently provided guidance to department heads on preparation of the 2021 budget. The current parameters assume no step or COLA and cost saving adjustments to the County’s health insurance plan in response to negative economic effects resulting from the COVID-19 pandemic. Such negative results include an estimated decrease in sales tax of \$200,000, decrease in investment income of \$350,000, decrease in transfer fees of \$50,000 and increased costs for contracting jail nurses in the amount of \$250,000. Also, given the uncertainty of state shared revenue for 2021, departments have been instructed to prepare 3 budget scenarios detailing status quo and 5%/10% cuts and explain how that would impact service delivery using the priority-based budgeting tool. No action was taken.

14. **Discussion and possible action on determining disposition of foreclosed properties, setting minimum bids for the sale of foreclosed properties and considering offers to purchase on foreclosed properties** – No action was taken.
15. **Convene in closed session pursuant to section 19.85 (1)(e) Wis. Stats. for deliberating or negotiating the purchase of public properties, the investing of public funds, or conducting other specified public business, whenever competitive or bargaining reasons require a closed session, for the purpose of discussion and possible action on setting minimum bids, selling and considering offers to purchase on tax foreclosed properties and other county owned properties and pursuant to section 19.85 (1)(g) Wis. Stats. to confer with legal counsel concerning strategy to be adopted by Jefferson County with respect to litigation in which it is or is likely to become involved for the purpose of discussion and possible action on claims against Jefferson County** – The Committee did not convene into closed session.
16. **Reconvene in open session for action on closed session items if necessary** – No action taken.
17. **Discussion and possible action on 2020 projections of budget vs. actual revenues and expenditures** – DeVries reviewed the unadjusted June 30 results and comparison to prior years at June 30, highlighting areas of concern. No action was taken.
18. **Review of the financial statements and department update for May 2020 - Finance Department** – No action taken.
19. **Review of the financial statements and department update for May 2020 - Treasurers Department** – No action taken.
20. **Review of the financial statements and department update for May 2020 - Child Support Department** - No action taken.
21. **Update on contingency fund balance** - The balance of the 2020 contingency funds is \$568,824. There are currently no contingency funds budgeted in the other contingency line, and the vested benefits balance is \$300,000.
22. **Discussion of funding for projects related to the new Highway Facilities and sale of old Highway Facilities.** Wehmeier updated the Committee on the progress of the old highway site.
23. **Set future meeting schedule, next meeting date, and possible agenda items** – The next meeting is scheduled for August 13, 2020 at 8:30 am. Potential agenda items include a presentation from DANA, the County’s investment advisors, and a report on the CARES purchases and expenditures to date.
24. **Review of Invoices** - After review of the invoices, a motion was made by Jaeckel/Nelan to approve the payment of invoices totaling \$4,427,338.97. The motion passed 5-0.
25. **Adjourn** – A motion was made by Jaeckel/Kutz to adjourn at 10:05 a.m. The motion passed 5-0.

Respectfully submitted,

Russell Kutz, Secretary
Finance Committee
Jefferson County
/mad

JEFFERSON COUNTY, WISCONSIN

AS OF JULY 31, 2020

➤ Estimated dollar impact^{(a)‡} of the aggregated Jefferson County portfolios over the Wisconsin LGIP since inception through 07/31/2020:

- \$ 97,650 annualized basis
- \$ 496,382 cumulative basis

5-Year Cash Flows as of 07/31/2020

<i>Date</i>	<i>Total Interest</i>	<i>Total Principal</i>	<i>Total Cashflow</i>
01/31/2021	309,272	4,898,370	5,207,642
07/31/2021	249,186	1,943,491	2,192,677
01/31/2022	219,520	2,760,574	2,980,094
07/31/2022	195,651	1,590,234	1,785,884
01/31/2023	176,729	2,066,595	2,243,324
07/31/2023	151,232	2,506,520	2,657,751
01/31/2024	132,567	1,898,129	2,030,697
07/31/2024	120,037	1,783,850	1,903,887
01/31/2025	96,465	1,336,718	1,433,183
07/31/2025	81,880	883,547	965,428
	1,732,539	21,668,029	23,400,568

➤ Year-to-date income was \$ 633,995 ^(a)

➤ Projected income^(b) for 2020 is approximately \$ 850,000

➤ Projected income^(b) for 2021 is \$ 400,000 - \$ 500,000

➤ Future Cash Flow consistent and healthy as shown

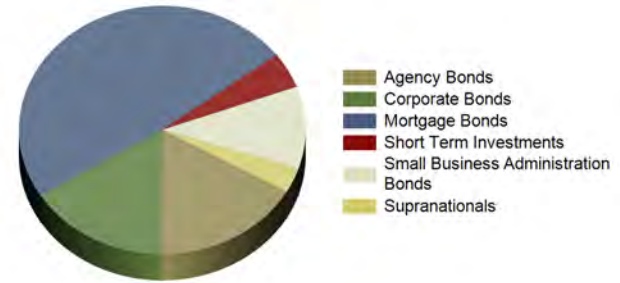
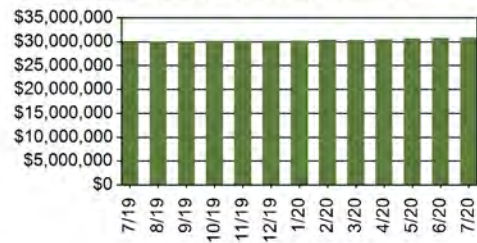
Account Activity 12/31/2019 to 7/31/2020

Portfolio Value on 12/31/2019	\$30,194,896.92
Contributions/Withdrawals	(\$15,259.65)
Investment Income	\$456,055.23
Unrealized Gain/Loss	\$338,463.97
Realized Gain/Loss	(\$112,639.23)
Change in Accrued Income	(\$25,052.29)
Portfolio Value on 07/31/2020	\$30,836,464.95
Total Gain after fees	\$633,995.31

Portfolio Allocation

Summary as of 7/31/2020	Market Value	% Assets	Income
Short Term Investments	1,428,885	4.6	
Agency Bonds	5,187,730	16.9	50,659
Small Business Administration Bonds	3,303,562	10.7	51,107
Mortgage Bonds	14,977,442	48.6	426,269
Corporate Bonds	4,934,073	15.9	133,563
Supranationals	1,004,774	3.3	20,000
Total Portfolio	30,836,465	100.0	681,703

Account Value (\$) Over Last 12 Months



Data as of July 31, 2020 (net of fees)

	Earned Yield Since Inception		Total Return	
	Annualized	Cumulative	Unannualized Year-to-Date	Average Annual Since Inception
3190m - Jefferson County, Wisconsin	1.49%	7.68%	2.11%	1.69%
Wisconsin LGIP	1.16%	6.04%	0.43%	1.16%
Dollar Impact of Portfolio over Wisconsin LGIP ‡	\$ 97,650	\$ 496,382		

Data as of July 31, 2020 (net of fees)

	Yield to Worst †	Coupon	Bond Characteristics		
			Maturity Years	Quality	Effective Duration
3190m - Jefferson County, Wisconsin	0.85%	2.29%	3.82 Years	Aaa	1.22
Bloomberg Barclays 1-3 Year Government Index	0.14%	1.66%	1.97 Years	Aaa	1.91

The Novel Coronavirus (COVID-19)

- 15 days to slow the spread became multiple months
- WFH is part of life
- Reopening in the south causing issues
- Months in and data and reporting is still not up to the task

The economic rebound

- Data is showing a rebound of a V nature
- But impact of stimulus and unemployment may fade
- Low interest rates seem here to stay
- Earnings and revenue in 2021 more focus than FY1

What permanent changes will emerge?

- Massive destruction in food service, hospitality
- Supply chain management, diversification
- Work remote, flex office
- More omnichannel and digital engagement of everything
- Robinhood and fantasy football

The end of the tunnel

- Treatment protocols have evolved
- Vaccine candidates in abundance
- Death rates declining
- Is virus weakening?
- Transmission elements not fully understood or communicated
- Second wave and fear mongering

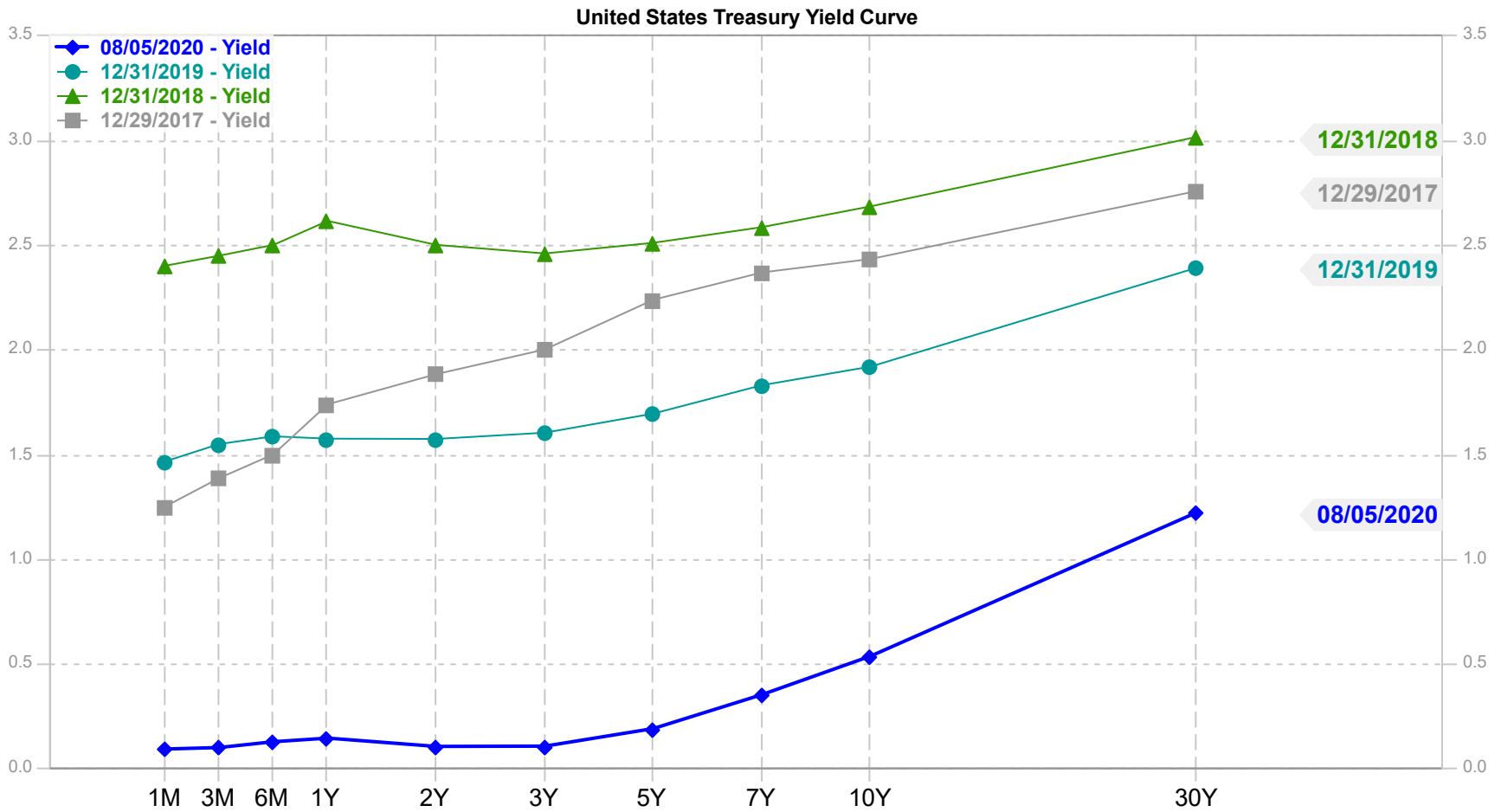
Oh yeah, there is an election

- Media noise picking up
- Will not be typical campaign season
- Outcomes not priced in yet, i.e. tax hikes on corporations

Lessons learned

- 2009 was relevant after all and investors were ready
- But growth still dominates
- The Fed employed all the tools from 2008 successfully
- Credit markets remain functional

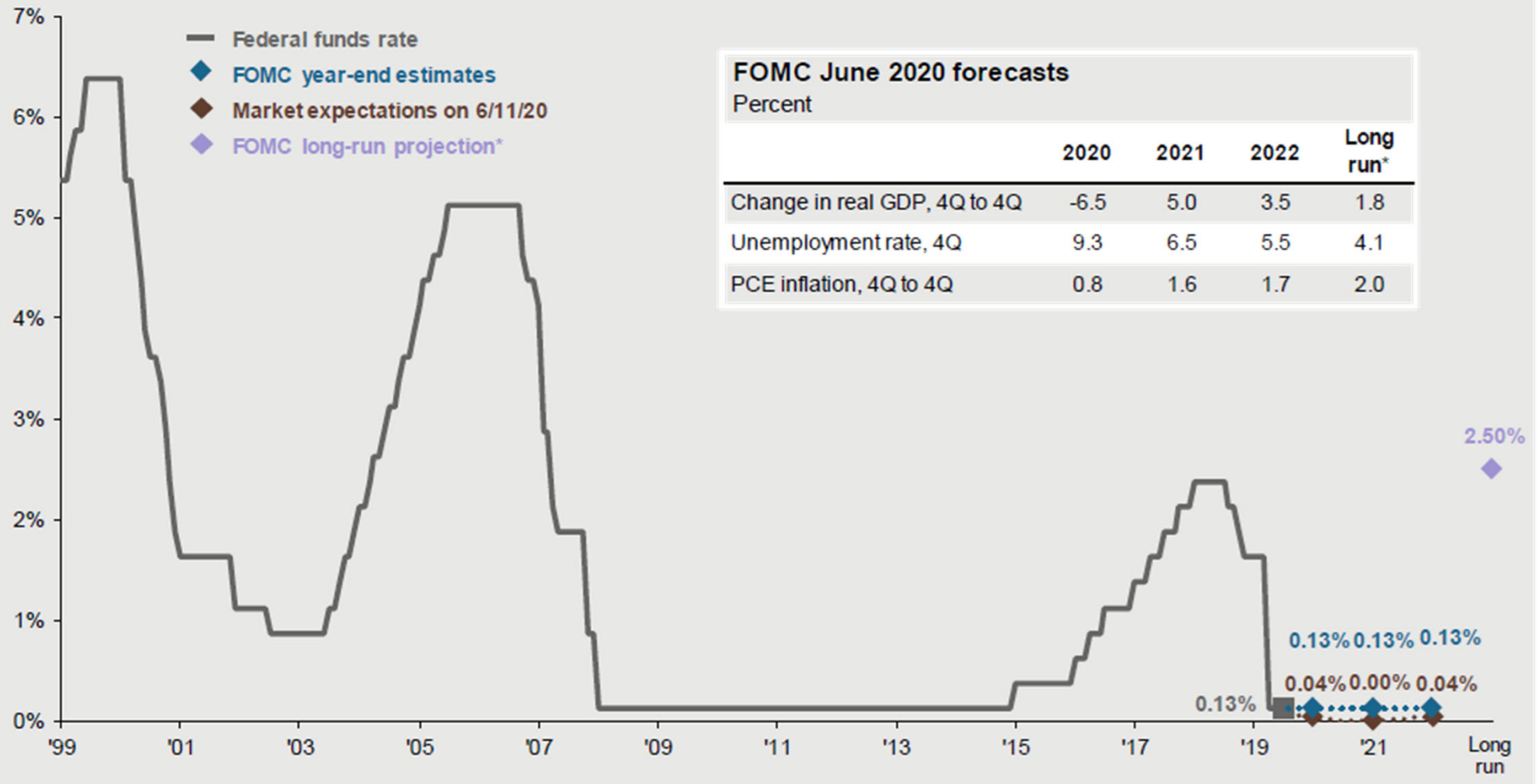
	Policy Rate ‡	Data as of August 05, 2020 †							
		6M	1Y	2Y	3Y	5Y	7Y	10Y	30Y
United States	0.25	0.13	0.14	0.11	0.11	0.19	0.35	0.54	1.22
Italy	(0.50)	(0.32)	(0.26)	(0.08)	0.03	0.46	0.63	0.98	1.91
Australia	0.25	n/a	0.21	0.26	0.25	0.37	0.55	0.82	1.28
New Zealand	0.25	n/a	n/a	0.31	n/a	0.35	n/a	0.75	n/a
Canada	0.25	0.19	n/a	0.26	n/a	0.30	0.33	0.47	0.92
Portugal	(0.50)	(0.65)	(0.59)	(0.46)	(0.34)	(0.22)	0.11	0.32	n/a
Spain	(0.50)	n/a	n/a	(0.44)	(0.36)	(0.26)	(0.02)	0.30	1.09
United Kingdom	0.10	0.04	(0.01)	(0.09)	(0.15)	(0.14)	(0.08)	0.11	0.65
Japan	(0.10)	(0.16)	(0.15)	(0.14)	(0.16)	(0.12)	(0.13)	0.01	0.54
Sweden	0.00	(0.13)	n/a	(0.32)	n/a	(0.30)	(0.24)	(0.09)	n/a
Ireland	(0.50)	(0.63)	(0.63)	(0.62)	(0.61)	(0.52)	(0.34)	(0.14)	0.43
France	(0.50)	(0.58)	(0.61)	(0.64)	(0.65)	(0.60)	(0.48)	(0.20)	0.48
Belgium	(0.50)	n/a	(0.55)	(0.63)	(0.66)	(0.60)	(0.45)	(0.23)	0.47
Austria	(0.50)	(0.58)	(0.62)	(0.65)	(0.63)	(0.61)	(0.48)	(0.34)	0.17
Finland	(0.50)	(0.64)	(0.64)	(0.65)	(0.65)	(0.62)	(0.51)	(0.39)	0.04
Netherlands	(0.50)	n/a	(0.61)	(0.65)	(0.67)	(0.69)	(0.57)	(0.39)	(0.09)
Denmark	0.05	n/a	n/a	(0.63)	(0.64)	(0.60)	n/a	(0.41)	n/a
Switzerland	(0.75)	n/a	n/a	(0.83)	(0.75)	(0.69)	(0.62)	(0.51)	(0.33)
Germany	(0.50)	(0.58)	(0.65)	(0.72)	(0.78)	(0.74)	(0.68)	(0.52)	(0.10)



©FactSet Research Systems

Federal funds rate expectations

FOMC and market expectations for the federal funds rate

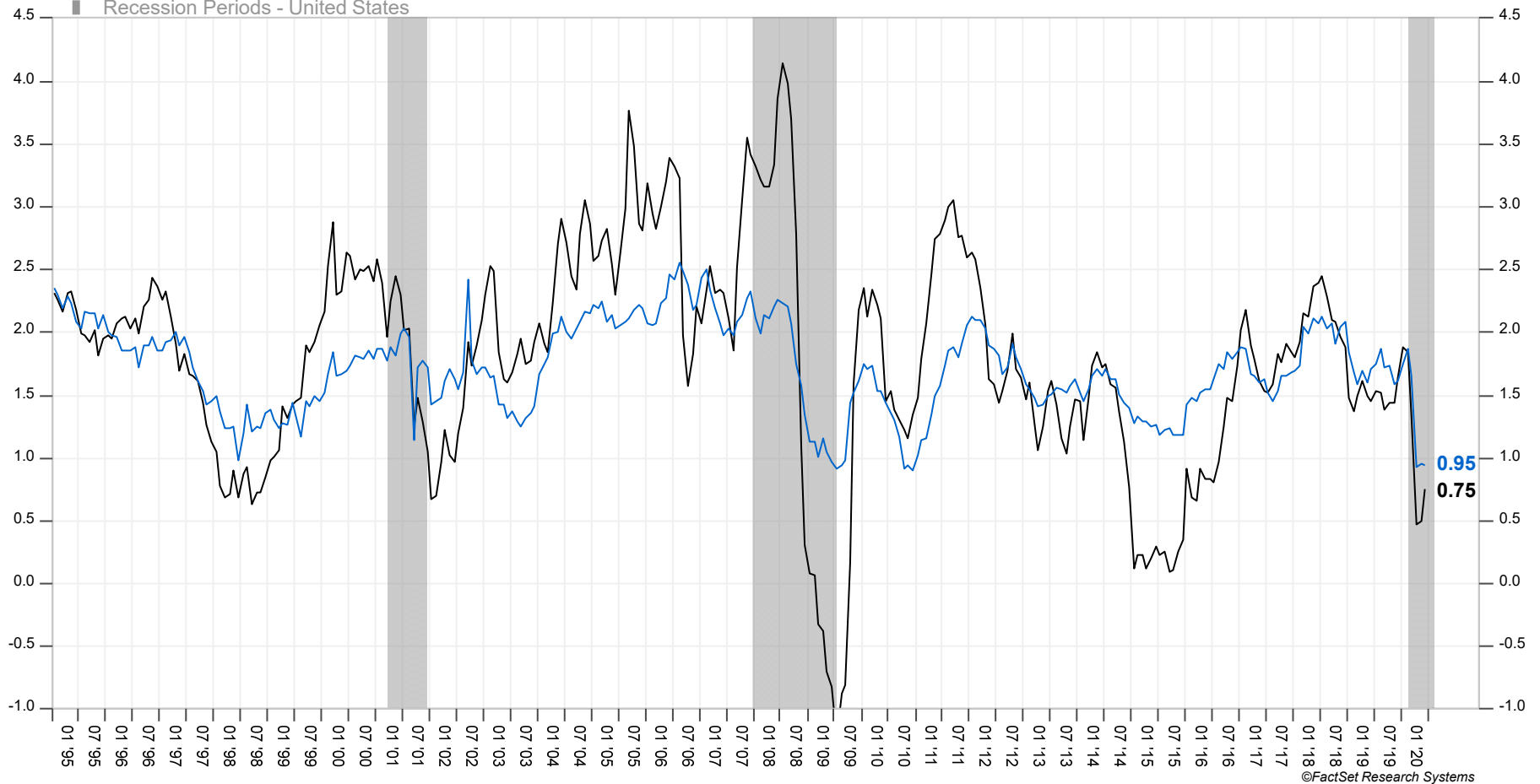


Source: Bloomberg, FactSet, Federal Reserve, J.P. Morgan Asset Management. Market expectations are the federal funds rates priced into the fed futures market as of the following date of the December 2019 FOMC meeting and are through December 2022. *Long-run projections are the rates of growth, unemployment and inflation to which a policymaker expects the economy to converge over the next five to six years in absence of further shocks and under appropriate monetary policy.

Inflation: Personal Consumption Expenditure (PCE) Index

1/31/1995 Through 6/30/2020

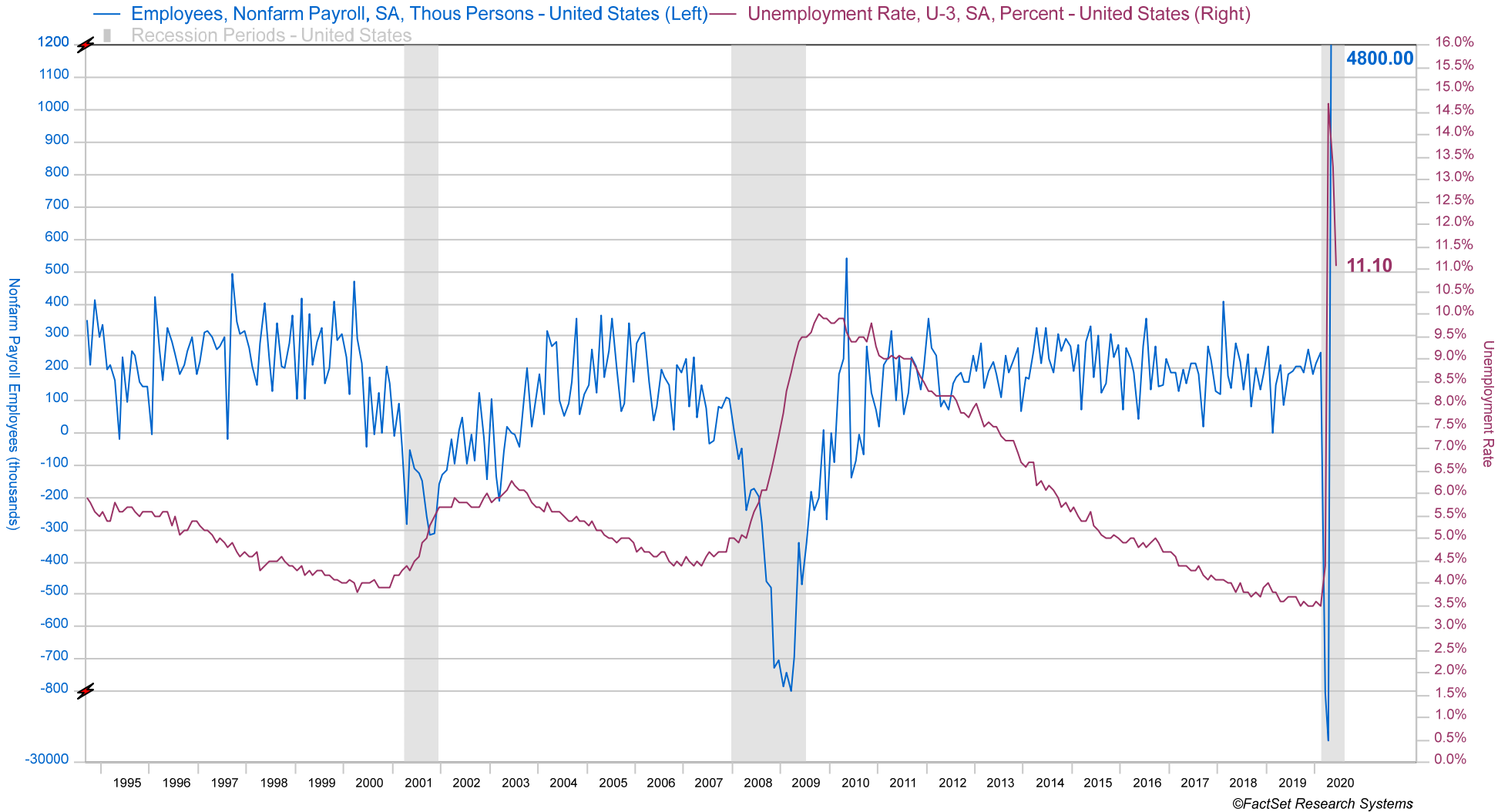
- PCE, Price Index, 2009=100, SA, Index - U.S. (6/30/2020)
- PCE, Excl. Food And Energy, Price Index, 2009=100, SA, Index - U.S. (6/30/2020)
- Recession Periods - United States



©FactSet Research Systems

Personal Consumption Expenditures (PCE), or the PCE price index, is a statistic compiled and released quarterly by the U.S. Bureau of Economic Analysis (BEA) <http://bea.gov/> that synthesizes a host of data, chief among them the U.S. Producer and Consumer Price indices. The PCE price index measures the price fluctuations and related consumer behavior for all domestic consumption of durable and non-durable goods and services targeted toward individuals and households. The PCE "core index", however, excludes the more volatile components of food and energy. Personal consumption is divided into two key categories: goods and services. The category of "goods" is further broken down into "durable" goods, which are big-ticket items (refrigerators, television sets, cars, mobile phones, etc.) that will last more than three years, and "non-durable" goods that are more transitory (e.g., cosmetics, fuel, clothing, etc.).

U.S. Change in Nonfarm Employment (thous) and Unemployment Rate (%): 9/30/1994 through 6/30/2020



©FactSet Research Systems

Dana Investment Advisors, Inc.

PORTFOLIO HOLDINGS



Report as of: 07/31/2020

Portfolio: 3190m - Jefferson County Wisconsin

Shares/ PAR	Identifier	Description	Price	Market Value	Pct. Assets	Income Accrued	Cur. Yield
Cash							
Short Term Investments							
	000009	Cash - Money Fund		829,740.87	2.70	.00	.01
220,409.86	SNVXX	Schwab Govt Money Fund	1.00	220,409.86	.72	.00	.01
Total Short Term Investments				1,050,150.73	3.42	.00	.01
Total Cash				1,050,150.73	3.42	.00	.01
Bonds							
Agency Bonds							
290,000	3133EJCE7	FEDERAL FARM CREDIT BANK 2.35% Due 02/12/2021	101.15	293,326.30	.95	3,199.26	2.32
1,000,000	3135G0Z63	FANNIE MAE 0.25% Due 12/09/2021	100.14	1,001,390.00	3.26	361.11	.25
1,000,000	3134GVD70	FREDDIE MAC 0.375% Due 06/08/2023	99.93	999,260.00	3.25	552.08	.38
1,000,000	3134GVA57	FREDDIE MAC 0.55% Due 11/27/2023	99.96	999,630.00	3.25	947.22	.55
325,000	3130AHQR7	FEDERAL HOME LOAN BANK 1.97% Due 12/23/2024	100.50	326,618.50	1.06	675.82	1.96
285,000	3133ELDZ4	FEDERAL FARM CREDIT BANK 1.97% Due 12/17/2025	99.51	283,594.95	.92	686.22	1.98
295,000	31422BGV6	FARMER MAC 2.26% Due 06/24/2026	109.80	323,895.25	1.05	685.22	2.06
300,000	3133ELWN0	FEDERAL FARM CREDIT BANK 1.47% Due 04/14/2027	100.33	300,999.00	.98	1,310.75	1.47
350,000	3133ELXQ2	FEDERAL FARM CREDIT BANK 1.5% Due 04/30/2029	99.99	349,954.50	1.14	1,312.50	1.50
300,000	3134GWGD2	FREDDIE MAC 1.25% Due 07/29/2030	99.77	299,310.00	.97	20.83	1.25
Total Agency Bonds				5,177,978.50	16.85	9,751.01	.98
Corporate Bonds							
300,000	053015AD5	AUTOMATIC DATA PROCESSNG 2.25% Due 09/15/2020	100.07	300,195.00	.98	2,550.00	2.25
300,000	084664BQ3	BERKSHIRE HATHAWAY FIN 4.25% Due 01/15/2021	101.82	305,457.00	.99	566.67	4.17
300,000	89233P5F9	TOYOTA MOTOR CREDIT CORP 3.4% Due 09/15/2021	103.43	310,293.00	1.01	3,853.33	3.29
300,000	037833BF6	APPLE INC 2.7% Due 05/13/2022	104.12	312,372.00	1.02	1,755.00	2.59
300,000	12572QAE5	CME GROUP INC 3% Due 09/15/2022	105.53	316,596.00	1.03	3,400.00	2.84
250,000	594918BH6	MICROSOFT CORP 2.65% Due 11/03/2022	105.15	262,882.50	.86	1,619.44	2.52
275,000	459200JC6	IBM CORP 2.875% Due 11/09/2022	105.77	290,875.75	.95	1,800.87	2.72
100,000	961214DS9	WESTPAC BANKING CORP 2.75% Due 01/11/2023	105.29	105,294.00	.34	152.78	2.61
295,000	478160BT0	JOHNSON & JOHNSON 2.05% Due 03/01/2023	104.43	308,074.40	1.00	2,519.79	1.96
200,000	191216AZ3	COCA-COLA CO/THE 2.5% Due 04/01/2023	106.20	212,392.00	.69	1,666.67	2.35
275,000	02079KAB3	ALPHABET INC 3.375% Due 02/25/2024	110.52	303,941.00	.99	4,021.88	3.05
100,000	30231GAC6	EXXON MOBIL CORPORATION 3.176% Due 03/15/2024	108.49	108,488.00	.35	1,199.82	2.93
295,000	09247XAL5	BLACKROCK INC 3.5% Due 03/18/2024	111.23	328,125.55	1.07	3,814.51	3.15
315,000	931142EL3	WALMART INC 2.85% Due 07/08/2024	109.01	343,378.35	1.12	573.56	2.61
300,000	822582CC4	SHELL INTERNATIONAL FIN 2% Due 11/07/2024	105.92	317,745.00	1.03	1,400.00	1.89
285,000	92826CAD4	VISA INC 3.15% Due 12/14/2025	112.65	321,046.80	1.04	1,172.06	2.80
300,000	166764BL3	CHEVRON CORP 2.954% Due 05/16/2026	111.91	335,742.00	1.09	1,846.25	2.64
105,000	961214DC4	WESTPAC BANKING CORP 2.7% Due 08/19/2026	110.46	115,986.15	.38	1,275.75	2.44
Total Corporate Bonds				4,898,884.50	15.94	35,188.38	2.73
Mortgage Bonds							
280,068.20	3138LEQR5	FN AN2263 2.29% Due 04/01/2025	106.02	296,929.14	.97	.00	2.16
494,153.89	3138LE7D7	FN AN2691 2.26% Due 11/01/2026	108.20	534,696.75	1.74	.00	2.09
474,111.13	3138EP4R2	FN AL7131 3.651% Due 05/01/2040	104.36	494,785.22	1.61	1,442.48	3.50
421,000.71	31288QAH3	FH 840908 4.059% Due 03/01/2042	104.76	441,023.92	1.44	3,036.00	3.87
104,599.05	3138EHYX4	FN AL1625 3.801% Due 04/01/2042	105.16	109,995.53	.36	331.32	3.61
143,739.30	3138EH6J6	FN AL1772 3.718% Due 04/01/2042	104.99	150,910.60	.49	445.35	3.54
163,788.31	3128LLSD9	FH 2B0516 2.895% Due 05/01/2042	105.40	172,633.20	.56	793.35	2.75
93,326.59	31300M7K3	FH 849898 3.935% Due 10/01/2042	104.94	97,932.63	.32	625.44	3.75
166,873.53	31347AFT6	FH 840178 3.898% Due 12/01/2042	103.17	172,167.42	.56	1,095.94	3.78
101,623.99	31300M4H3	FH 849824 3.567% Due 02/01/2043	104.84	106,546.66	.35	624.64	3.40
127,842.27	3138EQDW9	FN AL7316 3.706% Due 02/01/2043	104.74	133,901.99	.44	394.82	3.54
90,432.17	3138EK2Y0	FN AL3490 3.388% Due 05/01/2043	103.79	93,855.38	.31	255.32	3.26

Dana Investment Advisors, Inc.
PORTFOLIO HOLDINGS



Report as of: 07/31/2020

Portfolio: 3190m - Jefferson County Wisconsin

Shares/ PAR	Identifier	Description	Price	Market Value	Pct. Assets	Income Accrued	Cur. Yield
107,711.70	31347AFZ2	FH 840184 3.951% Due 06/01/2043	104.64	112,714.59	.37	711.91	3.78
130,519.58	31347AH72	FH 840254 3.819% Due 07/01/2043	104.73	136,693.29	.44	854.93	3.65
181,476.13	31347AT38	FH 840570 3.719% Due 07/01/2043	104.33	189,334.23	.62	1,178.08	3.56
243,113.10	31347A2W3	FH 840789 3.689% Due 10/01/2043	104.04	252,939.73	.82	1,566.09	3.55
95,439.41	3140J5F53	FN BM1087 3.585% Due 12/01/2043	103.82	99,086.15	.32	285.13	3.45
71,236.18	31347ALJ1	FH 840329 3.644% Due 02/01/2044	104.75	74,622.25	.24	433.05	3.48
314,098.26	3140J8P31	FN BM4041 3.634% Due 05/01/2044	104.64	328,670.85	1.07	951.19	3.47
112,152.67	3138ERKL3	FN AL9298 3.33% Due 07/01/2044	103.94	116,571.26	.38	311.22	3.20
124,264.82	3138ERWF3	FN AL9645 3.338% Due 07/01/2044	103.94	129,157.00	.42	345.66	3.21
767,513.69	3140JA3N6	FN BM6204 2.738% Due 09/01/2044	103.59	795,084.32	2.59	1,751.21	2.64
79,219.25	31300M3T8	FH 849810 3.647% Due 10/01/2044	104.00	82,388.02	.27	490.00	3.51
328,383.99	31347AR71	FH 840510 3.612% Due 12/01/2044	103.77	340,764.39	1.11	2,078.83	3.48
159,270.32	31347ATG9	FH 840551 3.743% Due 03/01/2045	103.91	165,502.73	.54	1,053.41	3.60
70,737.62	3138EQEH1	FN AL7335 3.43% Due 04/01/2045	103.40	73,143.41	.24	202.19	3.32
236,967.74	31347A4F8	FH 840822 3.58% Due 07/01/2045	104.76	248,238.16	.81	1,504.86	3.42
215,258.45	31347AV84	FH 840639 3.633% Due 09/01/2045	103.86	223,570.22	.73	1,365.09	3.50
201,199.16	31347AZR8	FH 840752 3.282% Due 12/01/2045	105.15	211,561.32	.69	1,146.49	3.12
267,311.90	3140J8FP3	FN BM3773 3.337% Due 12/01/2045	105.11	280,966.46	.91	743.35	3.17
788,722.96	31347AMD3	FH 840356 2.35% Due 08/01/2046	103.58	816,952.93	2.66	3,175.06	2.27
496,009.12	3140JAHV3	FN BM5643 2.629% Due 08/01/2046	103.52	513,472.61	1.67	1,086.67	2.54
462,824.40	31288QBM1	FH 840944 2.707% Due 11/01/2046	103.12	477,246.47	1.55	2,196.25	2.63
665,486.43	31288QCZ1	FH 840988 2.479% Due 03/01/2047	103.21	686,863.85	2.24	2,861.58	2.40
949,454.55	31288QEN6	FH 841041 2.621% Due 04/01/2047	103.76	985,200.56	3.21	4,206.51	2.53
700,335.50	3140JAMT2	FN BM5769 2.76% Due 04/01/2047	103.60	725,520.26	2.36	1,610.77	2.66
935,057.76	3140JBCK0	FN BM6373 2.659% Due 04/01/2047	103.80	970,601.18	3.16	2,071.93	2.56
779,947.24	31288QET3	FH 841046 2.435% Due 10/01/2047	103.64	808,368.51	2.63	3,241.32	2.35
774,079.73	3140JAWS3	FN BM6056 2.724% Due 09/01/2048	103.55	801,583.56	2.61	1,757.16	2.63
1,104,760.20	3140JA3M8	FN BM6203 3.147% Due 01/01/2049	104.13	1,150,423.26	3.74	2,897.23	3.02
313,316.63	3622AAGQ1	G2 784807 2.505% Due 08/20/2049	103.11	323,045.74	1.05	654.05	2.43
Total Mortgage Bonds				14,925,665.75	48.57	51,775.88	2.86
Small Business Administration Bonds							
393,576.63	83164MEQ8	SBA 510043 1.65% Due 01/25/2028	101.06	397,750.12	1.29	1,088.05	1.63
396,778.98	83164KB51	SBA 508160 2.575% Due 08/25/2032	102.88	408,214.15	1.33	1,707.88	2.50
951,780.58	83164MU72	SBA 510506 0.6% Due 12/25/2034	99.27	944,871.60	3.07	954.43	.60
556,156.77	83164MCN7	SBA 509977 1.65% Due 03/25/2042	101.68	565,486.30	1.84	1,531.89	1.62
940,198.27	83164MQX0	SBA 510370 2.075% Due 02/25/2044	104.10	978,701.27	3.18	3,255.99	1.99
Total Small Business Administration Bonds				3,295,023.44	10.72	8,538.24	1.55
Supranationals							
1,000,000	45905U7J7	INTL BK RECON & DEVELOP 2% Due 10/05/2020	100.33	1,003,330.00	3.27	1,444.44	1.99
Total Supranationals				1,003,330.00	3.27	1,444.44	1.99
Total Bonds				29,300,882.19	95.35	106,697.95	2.33
Total Portfolio				30,351,032.92			
Paydown Receivable				378,734.08			
Interest Accrued				106,697.95			
Dividends Accrued				0.00			
Total Portfolio with Accruals & Receivables				30,836,464.95			

Dana Investment Advisors, Inc. is an independent federally registered investment adviser providing equity and fixed income investment management services to a broad range of clients. All data is presented in U.S. Dollars. Portfolio Characteristics, Performance Report, Portfolio Holdings, and Sector Distributions reflect applicable investment holdings as of market close on the date indicated. Returns presented are exclusive of investment management and custodial fees, and net of transaction costs. Investment management fees would reduce the returns presented, for example: on a one-million dollar portfolio with an advisory fee of .75% earning a 10% return, the total compounded advisory fee over a five year period would be \$50,368. The resulting average annual return for the period would therefore be 9.17%. All returns were calculated on a time weighted total return basis. Performance does include the accrual of income and the reinvestment of dividends and interest received.

During various market cycles, the strategies discussed herein have demonstrated portfolio characteristics and returns that have been both more and less volatile than that of the comparable index. Indices shown were selected because they demonstrated a broad range of characteristics, some of these characteristics being deemed useful for limited comparison purposes only. Historical performance results for investment indices and/or categories have been provided for general comparison purposes only, and generally do not reflect the deduction of transaction and/or custodial charges, the deduction of an investment management fee, nor the impact of taxes, the incurrence of which would have the effect of decreasing historical performance results. It should not be assumed that your account holdings do or will correspond directly to any comparative indices.

While data contained herein was gathered from sources deemed reliable, the accuracy of the data presented cannot be guaranteed. Please remember that past performance may not be indicative of future results. Different types of investments involve varying degrees of risk, and there can be no assurance that the future performance of any specific investment or investment strategy made reference to directly or indirectly in this report, will be profitable, equal any corresponding indicated historical performance level(s), or will continue to be suitable for your portfolio. Due to various factors, including changing market conditions, the content of this report may no longer be reflective of current opinions, positions, investments or account allocations. Moreover, you should not assume that any discussion or information contained in this report serves as the receipt of, or as a substitute for, personalized investment advice from Dana Investment Advisors, Inc.

Dana Investment Advisors is not a custodian. Clients should be receiving detailed statements from their custodian at least quarterly. While Dana Investment Advisors regularly reconciles to custodian information, we encourage clients to review their custodian statement(s). The market prices shown on these pages represent the last reported sale on the stated report date as to listed securities or the bid price in the case of over-the-counter quotations. Prices on bonds and some other investments are based on round lot price quotations and are for evaluation purposes only and may not represent actual market values. Bonds sold on an odd lot basis (less than \$1 million) may have a dollar price lower than the round lot quote. Where no regular market exists, prices shown are estimates by sources considered reliable by Dana Investment Advisors, Inc. While the prices are obtained from sources we consider reliable, we cannot guarantee them.

Please remember to contact Dana Investment Advisors, Inc. at (800) 765-0157, or P.O. Box 1067 Brookfield, WI 53008 with any questions or if there are any changes in your personal financial situation or investment objectives for the purpose of reviewing, evaluating, and revising any previous recommendations or investment services. Please also advise Dana if you would like to impose, add, or modify any reasonable restrictions to your account. A copy of Dana's current Form ADV Brochure detailing a complete list of Dana's advisory services and fees continues to remain available for your review upon request.

Current List of Holdings: The market prices shown on these pages represent the last reported sale on the stated report date as to listed securities or the bid price in the case of over-the-counter quotations. Prices on bonds and some other investments are based on round lot price quotations and are for evaluation purposes only and may not represent actual market values. Bonds sold on an odd lot basis (less than \$1 million) may have a dollar price lower than the round lot quote. Where no regular market exists, prices shown are estimates by sources considered reliable by Dana Investment Advisors. While the prices are obtained from sources we consider reliable, we cannot guarantee them. Dana Investment Advisors is not a custodian. Clients should be receiving detailed statements from their custodian at least quarterly. While Dana Investment Advisors regularly reconciles to custodian information, we encourage clients to review their custodian statement(s).



20700 Swenson Drive
Suite 400
Waukesha, Wisconsin 53186

Mailing Address:
P.O. Box 1067
Brookfield, Wisconsin 53008-1067

800-765-0157

www.DanaInvestment.com

AREOLUTION NO. 2020-_____

Disallowing Claim of Dean Baldassari

Executive Summary

A claim has been made against Jefferson County for damages. The claim has been reviewed by the County’s insurance carrier, WMMIC, and was recommended for disallowance based on the finding that the County has no liability for this claim and is not legally responsible for the alleged damages. This resolution formally denies the claim filed against Jefferson County and directs the Corporation Counsel to give the claimant notice of disallowance. The Finance Committee met on August 13, 2020, and recommended forwarding this resolution to the County Board for approval.

WHEREAS, the Executive Summary is incorporated into this resolution, and

WHEREAS, the following claim was filed against Jefferson County as follows:

<u>Claimant</u>	<u>Date of Loss</u>	<u>Claim Filed</u>	<u>Description</u>	<u>Alleged Damages</u>
Dean Baldassari	6/25/20	7/01/20	Mr. Baldassari alleges damages to his vehicle when it was allegedly struck by a rock that was thrown from a Jefferson County Highway mower.	\$570.76

WHEREAS, said damages are alleged to be the result of negligence of Jefferson County, its agents, officials, officers or employees, and

WHEREAS, Jefferson County’s insurance carrier, Wisconsin Municipal Mutual Insurance Company, recommends disallowance of the claim on the basis that the County is not legally responsible for the alleged damages.

NOW, THEREFORE, BE IT RESOLVED that the Jefferson County Board of Supervisors hereby disallows said claim and directs the Corporation Counsel to give the claimant notice of disallowance.

Fiscal Note: This matter has been referred to Wisconsin Municipal Mutual Insurance Company (WMMIC) and will be resolved in accordance with the terms of the County’s policy.

Ayes: ___ Noes: ___ Abstain: ___ Absent: ___ Vacant: ___.

Referred By:
Finance Committee

9-08-2020

REVIEWED: County Administrator: _____; Corporation Counsel: _____; Finance Director: _____.



WISCONSIN MUNICIPAL MUTUAL INSURANCE COMPANY
4781 Hayes Road, Suite 201 | Madison, WI 53704 • www.wmmic.com
Telephone: 608.246.3336 | Toll Free: 866.823.4217 | Facsimile: 608.852.8647

Yelena Zarwell
311 S Center Avenue
Jefferson, Wisconsin 53549

July 7, 2020

RE: Claimant: Dean Baldassari
 Claim number: GLJC00001028
 Our Insured: Jefferson County
 Date of Loss: 6/25/2020

Dear Yelena Zarwell,

The above referenced claim was filed on 7/1/2020. Following a review of the information and an investigation of the facts, it has been determined that Jefferson County has no liability for this claim. Please issue a formal disallowance and provide a copy of this disallowance to WMMIC.

This claim will be closed on the date of receipt of the disallowance.

A copy of this letter has been placed in the claim file for reference. If you should have any further questions, please contact me.

Sincerely,

Sandi Linqvist
Liability Claim Representative
Wisconsin Municipal Mutual Insurance Company
(608) 245-6892
slinquist@wmmic.com

JEFFERSON COUNTY
 CARES - Billed through May 31, 2020

Paying Agency	Date Paid	Vendor Name	Cost Category	Nature of COVID-19-Related Goods/Services Provided	Status	Amount Paid	Estimated Reimbursement
Jefferson County	5/31/2020	AMAZON.COM INC	3 - SUPP & SVC	Hand Sanitizer for COVID disinfection	Accepted	213.00	213.00
Jefferson County	5/30/2020	GLOBALINDUSTRIAL	3 - SUPP & SVC	Spillfyer Sanitizing Wipe Kit, Bucket and Wipes for COVID disinfection	Accepted	633.39	633.39
Jefferson County	5/29/2020	ONE BEAT CPR LEARNING CENTER, LLC	2 - PPE	40-N95 MASKS (50/BOX) to protect against COVID-19	Accepted	9,040.00	9,040.00
Jefferson County	5/28/2020	NASSCO INC	3 - SUPP & SVC	10 Cases Purell Hand Sanitizer for County Buildings for COVID disinfection	Accepted	904.90	904.90
Jefferson County	5/28/2020	AMAZON.COM INC	2 - PPE	Latex Gloves for protection from COVID	Accepted	24.42	24.42
Jefferson County	5/27/2020	AMAZON.COM INC	2 - PPE	Reusable cotton face masks for employees to protect against COVID-19	Accepted	743.76	743.76
Jefferson County	5/23/2020	AMAZON.COM INC	2 - PPE	Full face shields for eye and face protection for protection from COVID	Accepted	96.99	96.99
Jefferson County	5/22/2020	SATELLITE TRACKING OF PEOPLE, LLC	3 - SUPP & SVC	GPS Tracking devices to release non-violent criminals due to COVID-19	Accepted	2,519.25	2,519.25
Jefferson County	5/22/2020	U S CELLULAR CHICAGO	9 - TELEWRK	Cell phone for County Veterans Service Officer for working remotely	Accepted	29.42	29.42
Jefferson County	5/22/2020	AMAZON.COM INC	2 - PPE	Disposable gloves for protection from COVID	Accepted	33.82	33.82
Jefferson County	5/22/2020	WATSON ACE HARDWARE	2 - PPE	Extra Large Nitrile Gloves to protect from COVID	Accepted	27.98	27.98
Jefferson County	5/21/2020	AMAZON.COM INC	2 - PPE	Disposable surgical medical face masks for protection from COVID	Accepted	111.50	111.50
Jefferson County	5/19/2020	WAL-MART #3499	9 - TELEWRK	Web Camera for meetings county wide to practice social distancing & telework	Accepted	216.13	216.13
Jefferson County	5/18/2020	UNITED MAILING SERVICES INC	3 - SUPP & SVC	Postage to send notice of rescheduling appointments due to COVID-19.	Accepted	1.02	1.02
Jefferson County	5/18/2020	SKYTRON LLC	3 - SUPP & SVC	Disinfection Robot with Smartdosage UV & Steri-Trak digital documentation	Accepted	40,358.40	40,358.40
Jefferson County	5/18/2020	UNITED MAILING SERVICES INC	3 - SUPP & SVC	Postage to send notice of rescheduling appointments due to COVID-19.	Accepted	175.64	175.64
Jefferson County	5/18/2020	RIPON AWARDJACKETS INC	2 - PPE	Personal Protective Equipment - Gowns	Accepted	900.00	900.00
Jefferson County	5/18/2020	ZBM INC	3 - SUPP & SVC	Clean and Sanitize Bus	Accepted	900.00	900.00
Jefferson County	5/18/2020	UNITED MAILING SERVICES INC	3 - SUPP & SVC	Postage in regards to serving on a jury - mailing COVID questionnaire to obtain information regarding the ability to serve	Accepted	850.01	850.01
Jefferson County	5/18/2020	JEFFREY A PARKER	2 - PPE	Surgical Masks and KN95 Masks to protect against COVID	Accepted	494.50	494.50
Jefferson County	5/18/2020	UNITED MAILING SERVICES INC	3 - SUPP & SVC	Postage to send notice of rescheduling a hearing, to provide instructions regarding how to appear remotely due to COVID-19.	Accepted	48.28	48.28
Jefferson County	5/18/2020	JEFFREY A PARKER	2 - PPE	Surgical Masks and KN95 Masks to protect against COVID	Accepted	494.50	494.50
Jefferson County	5/18/2020	U S CELLULAR CHICAGO	9 - TELEWRK	Phone with WI-FI calling for Management Information Systems employee to work remotely	Accepted	1,387.29	1,387.29
Jefferson County	5/15/2020	FASTENAL COMPANY	2 - PPE	4000 disposable masks for emergency management to protect against COVID-19	Accepted	14,029.05	14,029.05
Jefferson County	5/14/2020	WAL-MART #3499	3 - SUPP & SVC	Spray bottles for cleaning solutions, industrial strength and chemical resistant for COVID disinfection	Accepted	50.60	50.60
Jefferson County	5/13/2020	AMAZON.COM INC	2 - PPE	Non-Contact infrared forehead digital thermometers for temperature monitoring	Accepted	139.32	139.32
Jefferson County	5/13/2020	CDW GOVT	9 - TELEWRK	SSD hard drives used to update older notebooks for employees working remotely.	Accepted	229.85	229.85
Jefferson County	5/11/2020	SATELLITE TRACKING OF PEOPLE, LLC	3 - SUPP & SVC	GPS Tracking devices to release non-violent criminals due to COVID-19	Accepted	351.00	351.00
Jefferson County	5/11/2020	WATERTOWN ACE HARDWARE	2 - PPE	Disposable Latex Gloves to protect against COVID	Accepted	11.47	11.47
Jefferson County	5/11/2020	NASSCO INC	2 - PPE	Disposable protective masks for protect against COVID	Accepted	471.36	471.36
Jefferson County	5/11/2020	ZBM INC	3 - SUPP & SVC	Clean & Sanitize upper & lower locker rooms, pod and central area of jail and 3 small rooms	Accepted	450.00	450.00
Jefferson County	5/11/2020	MENARDS - JOHNSON CREEK	3 - SUPP & SVC	Hand Sanitizer for COVID disinfection	Accepted	15.98	15.98
Jefferson County	5/11/2020	MENARDS - JOHNSON CREEK	2 - PPE	Safety Glasses-CL, Clear Safety Glasses to protect against COVID droplets	Accepted	84.93	84.93
Jefferson County	5/11/2020	MENARDS - JOHNSON CREEK	3 - SUPP & SVC	Hand Sanitizer for COVID disinfection	Accepted	7.99	7.99
Jefferson County	5/11/2020	LAWSON PRODUCTS INC	3 - SUPP & SVC	Husky 814 Disinfectant cleaner COVID	Accepted	85.44	85.44
Jefferson County	5/11/2020	MENARDS - JOHNSON CREEK	3 - SUPP & SVC	Disinfecting Alcohol Wipes for COVID disinfection	Accepted	9.87	9.87
Jefferson County	5/11/2020	CDW GOVT	9 - TELEWRK	SSD hard drives used to update older notebooks for employees working remotely.	Accepted	177.38	177.38
Jefferson County	5/11/2020	MENARDS - JOHNSON CREEK	3 - SUPP & SVC	Heavy Duty Tarp for Skytron robot that cleans and disinfects	Accepted	39.96	39.96
Jefferson County	5/11/2020	CDW GOVT	9 - TELEWRK	USB device to plug into a computer to connect to a WI-FI network while working remotely	Accepted	23.30	23.30
Jefferson County	5/11/2020	JONAS OFFICE PRODUCTS LTD	3 - SUPP & SVC	Microdot Bleach Wipes Sheriff Disinfecting Wipes (COVID-19)	Accepted	311.76	311.76
Jefferson County	5/11/2020	NASSCO INC	2 - PPE	KHA Disposable protective masks to protect against COVID	Accepted	1,178.40	1,178.40
Jefferson County	5/11/2020	AMAZON.COM INC	3 - SUPP & SVC	Alcohol wipes for COVID-19 disinfection	Accepted	23.98	23.98
Jefferson County	5/11/2020	ZBM INC	3 - SUPP & SVC	Clean & Sanitize upper & lower locker rooms, pod and central area of jail and 3 small rooms	Accepted	1,500.00	1,500.00
Jefferson County	5/11/2020	MENARDS - JOHNSON CREEK	2 - PPE	Clear Safety Glasses to protect against COVID droplets	Accepted	51.69	51.69
Jefferson County	5/9/2020	AMAZON.COM INC	2 - PPE	Medical face masks to protect against COVID-19	Accepted	98.04	98.04
Jefferson County	5/7/2020	ALCOPRO INC	3 - SUPP & SVC	Trans-dermal drug patch testing supplies. Patches are worn by participants and we can detect drug usage from their sweat	Accepted	691.00	691.00
Jefferson County	5/7/2020	FTD FLORAL	3 - SUPP & SVC	Health Department Employee appreciation for the extra work due to COVID	Rejected	706.37	-
Jefferson County	5/6/2020	ELECTION SYSTEMS & SOFTWARE INC	3 - SUPP & SVC	14 inch Thermal Express vote cards and shipping due to additional absentee voting due to COVID-19	Accepted	1,883.04	1,883.04
Jefferson County	5/6/2020	FASTENAL COMPANY	2 - PPE	2000 Disposable KN95 Masks for emergency management to protect against COVID-19	Accepted	7,000.00	7,000.00
Jefferson County	5/4/2020	MCKESSON MEDICAL SURGICAL	2 - PPE	Temple touch thermometer to monitor temperatures	Accepted	12.89	12.89
Jefferson County	5/4/2020	MCKESSON MEDICAL SURGICAL	2 - PPE	Disposable Cover, probe oral suretemp	Accepted	9.28	9.28
Jefferson County	5/4/2020	MCKESSON MEDICAL SURGICAL	2 - PPE	Disposable Cover, probe oral suretemp	Accepted	18.56	18.56
Jefferson County	5/4/2020	MCKESSON MEDICAL SURGICAL	2 - PPE	Disposable Sheath, Thermometer oral digital	Accepted	3.48	3.48
Jefferson County	5/4/2020	MUNICIPAL LAW & LITIGATION GROUP SC	3 - SUPP & SVC	COVID related legal services, working on a memorandum of understanding for sharing of COVID-19 cases and other HIPAA related information	Accepted	1,045.00	1,045.00
Jefferson County	5/4/2020	MCKESSON MEDICAL SURGICAL	2 - PPE	Disposable Sheath, Thermometer oral digital to monitor temperatures	Accepted	10.48	10.48
Jefferson County	5/1/2020	SLACK	9 - TELEWRK	Adding additional users to our Slack account due to COVID-19 and employees working remotely. Slack Technologies is providing 50% off	Accepted	55.33	55.33
Jefferson County	4/30/2020	ZBM INC	2 - PPE	Surgical Masks COVID-19	Accepted	500.00	500.00
Jefferson County	4/29/2020	FASTENAL COMPANY	2 - PPE	Disposable Masks to protect against COVID	Accepted	1,455.00	1,455.00
Jefferson County	4/27/2020	SCHILLING SUPPLY CO INC	3 - SUPP & SVC	Lysol disinfectant spray, clorox Disinfectant Wipes, Parsley Plus All purpose cleaner, Purell Hand Sanitizer for County Buildings	Accepted	224.39	224.39
Jefferson County	4/27/2020	REDHAWK MEDICAL PRODUCTS & SERVICES, LLC	2 - PPE	3 - JBX 178 Non-Contact Thermometers to monitor temperatures	Accepted	275.00	275.00
Jefferson County	4/27/2020	Theisens	3 - SUPP & SVC	Windex cleaner multi-surface disinfectant and Latex gloves to protect against COVID	Accepted	77.91	77.91
Jefferson County	4/27/2020	GEARSPRAY	2 - PPE	2 Forehead thermometer non-contact infrared thermometer to monitor temperatures	Accepted	164.95	164.95
Jefferson County	4/27/2020	WATSON ACE HARDWARE	3 - SUPP & SVC	Dawn Anti-bacterial soap, windex cleaner multi-surface disinfectant and latex gloves to protect against COVID	Accepted	42.33	42.33
Jefferson County	4/27/2020	MENARDS - JOHNSON CREEK	2 - PPE	50 CT Nitrile Gloves to protect against COVID	Accepted	5.26	5.26
Jefferson County	4/27/2020	MENARDS - JOHNSON CREEK	3 - SUPP & SVC	Hand sanitizer, 121 ounce bleach for COVID disinfection	Accepted	18.50	18.50
Jefferson County	4/27/2020	GADGETS HUB	2 - PPE	Forehead thermometer non-contact infrared thermometer to monitor temperatures	Accepted	71.89	71.89
Jefferson County	4/25/2020	QUILL CORPORATION	9 - TELEWRK	Purchased additional desktop cameras for employees working remotely to sign into zoom meetings.	Accepted	69.98	69.98
Jefferson County	4/22/2020	DOCUSIGN INC	9 - TELEWRK	Consent for services, grievance policy, HIPAA rights, etc. are signed electronically instead of in person to assist in telework	Accepted	11,800.00	11,800.00
Jefferson County	4/22/2020	WAL-MART	3 - SUPP & SVC	Batteries for Door Modules for Skytron unit that cleans and disinfects for COVID within jail cells	Accepted	10.44	10.44
Jefferson County	4/22/2020	AMAZON.COM INC	2 - PPE	COVID facemasks	Accepted	1,562.44	1,562.44
Jefferson County	4/21/2020	CHAPIN INTERNATIONAL INC	3 - SUPP & SVC	Wand Replacement for backpack sprayer and shutoff valve	Accepted	41.64	41.64

JEFFERSON COUNTY
 CARES - Billed through May 31, 2020

Jefferson County	4/21/2020	WAL-MART	3 - SUPP & SVC	Tape & Extension Cord for Skytron robot that cleans and disinfects for COVID	Accepted	78.94	78.94
Jefferson County	4/20/2020	LINDERT, TODD W	3 - SUPP & SVC	Disinfectant Wipes for Dispatch (Sheriff) for COVID	Accepted	18.94	18.94
Jefferson County	4/20/2020	BRENDA ANNETTE STELTER	2 - PPE	Surgical Face Masks and KN95 Face Masks to protect against COVID	Accepted	1,400.61	1,400.61
Jefferson County	4/20/2020	MCMASTER-CARR SUPPLY CO	2 - PPE	Disposable Latex Gloves to protect against COVID	Accepted	44.62	44.62
Jefferson County	4/20/2020	UNITED MAILING SERVICES INC	3 - SUPP & SVC	Postage to send notice of rescheduling a hearing, to provide instructions regarding how to appear remotely.	Accepted	130.24	130.24
Jefferson County	4/20/2020	MENARDS - JOHNSON CREEK	3 - SUPP & SVC	Lysol Disinfecting Spray Highway to protect against COVID	Accepted	19.33	19.33
Jefferson County	4/20/2020	UNITED MAILING SERVICES INC	3 - SUPP & SVC	Postage in regards to serving on a jury - mailing a COVID questionnaire to obtain information regarding the ability to se	Accepted	255.44	255.44
Jefferson County	4/20/2020	U S CELLULAR CHICAGO	9 - TELEWRK	Additional Equipment for Remote Access for employees working remotely	Accepted	1,377.09	1,377.09
Jefferson County	4/20/2020	MENARDS - JOHNSON CREEK	3 - SUPP & SVC	Distilled Water and Ziploc Sandwich bags used to make our own disinfectant wipes to protect against COVID	Accepted	10.36	10.36
Jefferson County	4/20/2020	U S CELLULAR CHICAGO	9 - TELEWRK	Phone with Wi-Fi calling for Management Information Systems employee to work remotely	Accepted	674.00	674.00
Jefferson County	4/20/2020	FARLEY, PATRICK K	3 - SUPP & SVC	Disinfectant Wipes Department use (Sheriff) for COVID	Accepted	25.26	25.26
Jefferson County	4/20/2020	MENARDS - JOHNSON CREEK	3 - SUPP & SVC	Simple Green Cleaner highway for COVID disinfection	Accepted	2.01	2.01
Jefferson County	4/20/2020	AMAZON.COM INC	2 - PPE	COVID Gloves for protection from COVID	Accepted	6.58	6.58
Jefferson County	4/20/2020	UNITED MAILING SERVICES INC	3 - SUPP & SVC	Postage to send notice of rescheduling appointments due to COVID-19.	Accepted	25.75	25.75
Jefferson County	4/20/2020	TRACY L NEUHAUSER	3 - SUPP & SVC	Disinfectant Wipes Department use (Sheriff) for COVID	Accepted	37.85	37.85
Jefferson County	4/20/2020	WASHINGTON COUNTY TREASURER	3 - SUPP & SVC	Additional Absentee Envelopes due to higher demand for absentee voting due to COVID-19	Accepted	540.00	540.00
Jefferson County	4/19/2020	AMAZON.COM INC	2 - PPE	COVID Gloves for protection from COVID	Accepted	32.24	32.24
Jefferson County	4/17/2020	UNOCLEAN	3 - SUPP & SVC	Broad spectrum disinfectant germicidal soap for COVID disinfection	Accepted	96.40	96.40
Jefferson County	4/16/2020	THE MAREK GROUP, INC	2 - PPE	Face Shields for protection from COVID-19	Accepted	424.84	424.84
Jefferson County	4/16/2020	AMAZON.COM INC	2 - PPE	KN95 Face Masks for protection from COVID	Accepted	2,209.80	2,209.80
Jefferson County	4/15/2020	AMAZON.COM INC	2 - PPE	3-Pack Forehead Thermometer non-contact infrared to monitor temperatures	Accepted	324.99	324.99
Jefferson County	4/15/2020	AMAZON.COM INC	3 - SUPP & SVC	Hand Sanitizer Gel for COVID disinfection	Accepted	684.96	684.96
Jefferson County	4/14/2020	NASSCO INC	2 - PPE	KHA Disposable protective masks to protect against COVID	Accepted	314.24	314.24
Jefferson County	4/14/2020	AMAZON.COM INC	2 - PPE	Face Masks for protection from COVID-19	Accepted	362.60	362.60
Jefferson County	4/14/2020	AMAZON.COM INC	2 - PPE	Forehead thermometer non-contact infrared thermometer to monitor temperatures	Accepted	59.99	59.99
Jefferson County	4/13/2020	Haag, Constance Jo	3 - SUPP & SVC	Juror that reported for jury duty and was released for COVID-19 related issues. (Travel, caregiver, symptoms etc.)	Accepted	6.12	6.12
Jefferson County	4/13/2020	Schlomer, Larry Marvin	3 - SUPP & SVC	Juror that reported for jury duty and was released for COVID-19 related issues. (Travel, caregiver, symptoms etc.)	Accepted	10.20	10.20
Jefferson County	4/13/2020	MENARDS - JOHNSON CREEK	3 - SUPP & SVC	Disinfecting Wipes Human Services for COVID	Accepted	10.17	10.17
Jefferson County	4/13/2020	JP GRAPHICS INC	3 - SUPP & SVC	Additional Absentee Envelopes due to higher demand for absentee voting due to COVID-19	Accepted	1,086.80	1,086.80
Jefferson County	4/13/2020	Schlomer, Larry Marvin	3 - SUPP & SVC	Juror that reported for jury duty and was released for COVID-19 related issues. (Travel, caregiver, symptoms etc.)	Accepted	20.00	20.00
Jefferson County	4/13/2020	Gonzalez Garcia, Jaqueline	3 - SUPP & SVC	Juror that reported for jury duty and was released for COVID-19 related issues. (Travel, caregiver, symptoms etc.)	Accepted	20.00	20.00
Jefferson County	4/13/2020	Haag, Constance Jo	3 - SUPP & SVC	Juror that reported for jury duty and was released for COVID-19 related issues. (Travel, caregiver, symptoms etc.)	Accepted	20.00	20.00
Jefferson County	4/13/2020	JEFFERSON GLASS INC	3 - SUPP & SVC	45 Acrylic screens for election polling places due to COVID-19	Accepted	1,704.00	1,704.00
Jefferson County	4/13/2020	THE MAREK GROUP, INC	2 - PPE	Face Shields (COVID-19) Jail	Accepted	282.00	282.00
Jefferson County	4/13/2020	MENARDS - JOHNSON CREEK	3 - SUPP & SVC	Backpack Sprayer Human Services for disinfecting for COVID	Accepted	159.99	159.99
Jefferson County	4/13/2020	MENARDS - JOHNSON CREEK	3 - SUPP & SVC	Backpack Sprayer Human Services for disinfecting for COVID	Accepted	479.97	479.97
Jefferson County	4/13/2020	NASSCO INC	3 - SUPP & SVC	Disinfectant Wipes for COVID disinfection	Accepted	98.76	98.76
Jefferson County	4/13/2020	Kleinschmidt, Rick A	3 - SUPP & SVC	Juror that reported for jury duty and was released for COVID-19 related issues. (Travel, caregiver, symptoms etc.)	Accepted	20.00	20.00
Jefferson County	4/13/2020	ZOOM.US	9 - TELEWRK	Zoom Subscription to hold meetings while social distancing and telework throughout the county	Accepted	2,487.00	2,487.00
Jefferson County	4/13/2020	Gonzalez Garcia, Jaqueline	3 - SUPP & SVC	Juror that reported for jury duty and was released for COVID-19 related issues. (Travel, caregiver, symptoms etc.)	Accepted	20.81	20.81
Jefferson County	4/13/2020	Kleinschmidt, Rick A	3 - SUPP & SVC	Juror that reported for jury duty and was released for COVID-19 related issues. (Travel, caregiver, symptoms etc.)	Accepted	13.26	13.26
Jefferson County	4/13/2020	JP GRAPHICS INC	3 - SUPP & SVC	Additional Absentee Envelopes due to higher demand for absentee voting due to COVID-19	Accepted	971.10	971.10
Jefferson County	4/9/2020	BRENDA ANNETTE STELTER	2 - PPE	Surgical Masks and KN95 Masks to protect against COVID	Accepted	2,876.69	2,876.69
Jefferson County	4/9/2020	BRENDA ANNETTE STELTER	2 - PPE	KN95 Face Masks for protection from COVID	Accepted	1,524.89	1,524.89
Jefferson County	4/6/2020	MENARDS - JOHNSON CREEK	3 - SUPP & SVC	Lysol Disinfecting Wipes Jail for COVID	Accepted	10.47	10.47
Jefferson County	4/6/2020	SCHILLING SUPPLY CO INC	3 - SUPP & SVC	Excelon LTX foam soap for restrooms COVID-19 disinfection	Accepted	478.39	478.39
Jefferson County	4/6/2020	GOYER ACE FORT	2 - PPE	Protective Eyewear Over the Glasses Clear Safety Glasses to protect the Sheriff Deputies from COVID droplets	Accepted	96.91	96.91
Jefferson County	4/6/2020	WESTERN STATES	3 - SUPP & SVC	Additional Absentee Envelopes due to higher demand for absentee voting due to COVID-19	Accepted	545.38	545.38
Jefferson County	4/6/2020	MENARDS - JOHNSON CREEK	2 - PPE	N95 Valved Respirator Masks (COVID) Jail	Accepted	119.76	119.76
Jefferson County	4/6/2020	MENARDS - JOHNSON CREEK	2 - PPE	N95 Valved Respirator Masks (COVID) Jail	Accepted	95.94	95.94
Jefferson County	4/6/2020	SHI INTERNATIONAL CORP	9 - TELEWRK	RSA Security Fob Keys for dual authentication code for employees to work remotely due to COVID-19	Accepted	5,880.00	5,880.00
Jefferson County	4/6/2020	MENARDS - JOHNSON CREEK	2 - PPE	N95 Valved Respirator Masks (COVID) Jail	Accepted	15.99	15.99
Jefferson County	4/6/2020	WESTERN STATES	3 - SUPP & SVC	Additional Absentee Envelopes due to higher demand for absentee voting due to COVID-19	Accepted	515.89	515.89
Jefferson County	4/6/2020	MENARDS - JOHNSON CREEK	3 - SUPP & SVC	Lysol Disinfecting Wipes Jail for COVID	Accepted	10.47	10.47
Jefferson County	4/4/2020	AMZN MKTP US*MB96081A2	3 - SUPP & SVC	Stylus Pens for Universal Touch Screen Devices (Expressvote) elections. Voters were provided a new stylus pen to use	Accepted	18.50	18.50
Jefferson County	4/3/2020	Best Buy	9 - TELEWRK	NETGEAR AC1200 Dual Band WiFi US Adapter for working remotely	Accepted	274.95	274.95
Jefferson County	4/2/2020	AMZN MKTP US*MB96081A2	3 - SUPP & SVC	Stylus Pens for Universal Touch Screen Devices (Expressvote) elections. Voters were provided a new stylus pen to use	Accepted	37.00	37.00
Jefferson County	4/2/2020	REDHAWK MEDICAL PRODUCTS & SERVICES, LLC	2 - PPE	2 - Non-Contact Thermometer (COVID-19) Jail to monitor temperatures	Accepted	195.00	195.00
Jefferson County	4/1/2020	UNITED MAILING SERVICES INC	3 - SUPP & SVC	Postage to send notice of rescheduling appointments due to COVID-19.	Accepted	50.99	50.99
Jefferson County	3/31/2020	WAL-MART #3499	3 - SUPP & SVC	Ammonia All Purpose Cleaner and Multi fold paper towels for COVID disinfection	Accepted	6.30	6.30
Jefferson County	3/30/2020	GOYER ACE FORT	3 - SUPP & SVC	All County Parks were closed due to COVID-19. Purchased Extra Locks to Close Bathrooms, Padlocks, Frog Tape to rope	Accepted	236.04	236.04
Jefferson County	3/30/2020	MENARDS - JOHNSON CREEK	3 - SUPP & SVC	All County Parks were closed due to COVID-19. Purchased Safety Hasp Restroom Door Locks.	Accepted	13.96	13.96
Jefferson County	3/30/2020	ALCOPRO INC	3 - SUPP & SVC	Trans-dermal drug patch testing supplies. Patches are worn by participants and we can detect drug usage from their s	Accepted	620.00	620.00
Jefferson County	3/30/2020	JONAS OFFICE PRODUCTS LTD	3 - SUPP & SVC	All County Parks were closed due to COVID-19. Laminator pouches for signs to indicated "Park Closed", "Bathroom Clo	Accepted	52.77	52.77
Jefferson County	3/30/2020	MENARDS - JOHNSON CREEK	3 - SUPP & SVC	All County Parks were closed due to COVID-19. Purchased Safety Hasp Door Locks.	Accepted	41.11	41.11
Jefferson County	3/29/2020	WAL-MART	3 - SUPP & SVC	Disinfecting Wipes (COVID-19) Jail	Accepted	18.65	18.65
Jefferson County	3/28/2020	AMZN MKTP US*MB96081A2	3 - SUPP & SVC	Sign to ask delivery person to ring doorbell for deliveries due to the front lobby being closed duet to COVID.	Accepted	12.99	12.99
Jefferson County	3/27/2020	WAL-MART #3499	3 - SUPP & SVC	The Congregate Meals sites shut down and we moved entirely to Home Delivered meals. These are additional coolers	Accepted	50.64	50.64
Jefferson County	3/26/2020	AMZN MKTP	3 - SUPP & SVC	Pens purchased for the elections for in person voting. Voters were provided a new pen if they did not have one with th	Accepted	8.90	8.90
Jefferson County	3/26/2020	ZOOM.US	9 - TELEWRK	Zoom Subscription to hold meetings while social distancing & telework throughout the county	Accepted	118.03	118.03
Jefferson County	3/26/2020	AMZN MKTP US*MB96081A2	3 - SUPP & SVC	Stylus Pens for Universal Touch Screen Devices (Expressvote) elections. Voters were provided a new stylus pen to use	Accepted	18.50	18.50
Jefferson County	3/26/2020	USPS PO 5641300660	3 - SUPP & SVC	Paycheck mailed securely and over night. Typically paychecks would have been distributed to their office, but due to e	Accepted	26.35	26.35

JEFFERSON COUNTY
CARES - Billed through May 31, 2020

Jefferson County	3/26/2020	AMZN MKTP US*MB96081A2	3 - SUPP & SVC	Stylus Pens for Universal Touch Screen Devices (Expressvote) elections. Voters were provided a new stylus pen to use	Accepted	18.50	18.50		
Jefferson County	3/26/2020	AMZN MKTP US*MB96081A2	3 - SUPP & SVC	Wireless doorbell to be used to be alerted of deliveries due to the front lobby being closed due to COVID.	Accepted	18.99	18.99		
Jefferson County	3/25/2020	WAL-MART #3499	3 - SUPP & SVC	Distilled water and paper towels to make our own disinfectant wipes for COVID disinfection	Accepted	19.88	19.88		
Jefferson County	3/25/2020	PICK N SAVE MEGA FOODMART	3 - SUPP & SVC	Disinfecting Wipes (COVID-19) Jail	Accepted	29.97	29.97		
Jefferson County	3/25/2020	ZOOM.US	9 - TELEWRK	Zoom Subscription to hold meetings while social distancing & telework throughout the county	Accepted	41.53	41.53		
Jefferson County	3/25/2020	WAL-MART #3499	3 - SUPP & SVC	Dawn Soap for cleaning and sanitizing for COVID disinfection	Accepted	12.85	12.85		
Jefferson County	3/24/2020	AMZN MKTP	3 - SUPP & SVC	Stylus Pens for Universal Touch Screen Devices (Expressvote) elections. Voters were provided a new stylus pen to use	Accepted	129.50	129.50		
Jefferson County	3/24/2020	WAL-MART #3499	3 - SUPP & SVC	Containers and funnel to make our own disinfectant wipes for COVID disinfection	Accepted	35.81	35.81		
Jefferson County	3/24/2020	ZOOM.US	9 - TELEWRK	Zoom Subscription to hold meetings while social distancing & telework throughout the county	Accepted	142.07	142.07		
Jefferson County	3/23/2020	FARM & FLT OF WATERTOW	3 - SUPP & SVC	Pine Sol, Simple Green Degreaser and Goop Scrub Towels for COVID disinfection	Accepted	69.91	69.91		
Jefferson County	3/23/2020	QUILL CORPORATION	3 - SUPP & SVC	Pens purchased for the elections for in person voting. Voters were provided a new pen if they did not have one with th	Accepted	1,247.50	1,247.50		
Jefferson County	3/23/2020	DOLLAR TREE	3 - SUPP & SVC	Travel size Hand Sanitizer for employees for COVID disinfection	Accepted	10.00	10.00		
Jefferson County	3/23/2020	WAL-MART	3 - SUPP & SVC	Disinfecting Wipes (COVID-19) Jail	Accepted	10.98	10.98		
Jefferson County	3/23/2020	WAL-MART #3499	9 - TELEWRK	Web Camera for meetings county wide to practice social distancing & telework	Accepted	27.47	27.47		
Jefferson County	3/19/2020	WAL-MART #3499	9 - TELEWRK	Web Cameras for meetings county wide to practice social distancing & telework	Accepted	64.00	64.00		
Jefferson County	3/18/2020	PICK N SAVE #888	3 - SUPP & SVC	Sanitizing hand lotion for COVID disinfection	Accepted	8.29	8.29		
Jefferson County	3/18/2020	PICK N SAVE #888	3 - SUPP & SVC	Paper towels for cleaning and sanitizing for COVID disinfection	Accepted	19.99	19.99		
Jefferson County	3/17/2020	FESTIVAL FOODS	3 - SUPP & SVC	Vaseline Lotion to relieve dry hands from all of the hand sanitizer used for COVID disinfection	Accepted	29.56	29.56		
Jefferson County	3/17/2020	NASCO FORT ATKINSON	3 - SUPP & SVC	Gallon jug of alcohol, paper towels, oil used to make our own disinfectant wipes for COVID disinfection	Accepted	65.75	65.75		
Jefferson County	3/17/2020	WALGREENS.COM #5995	3 - SUPP & SVC	Gurunanda Ecllypts Essential oil purchased to make our own hand sanitizer for COVID disinfection	Accepted	7.49	7.49		
Jefferson County	3/15/2020	ZOOM.US	9 - TELEWRK	Zoom Subscription to hold meetings while social distancing and telework throughout the county	Accepted	1,999.00	1,999.00		
Jefferson County	3/14/2020	AMZN MKTP US*MB96081A2	9 - TELEWRK	Computer blue light blocking screen protector for working from home so other family members can't see the screen/h	Accepted	93.98	93.98		
Jefferson County	3/14/2020	AMZN MKTP US*MB96081A2	9 - TELEWRK	Computer blue light blocking screen protector for working from home so other family members can't see the screen/h	Accepted	46.99	46.99		
Jefferson County	3/14/2020	AMZN MKTP US*MB96081A2	9 - TELEWRK	Computer blue light blocking screen protector for working from home so other family members can't see the screen/h	Accepted	46.99	46.99		
Jefferson County	3/13/2020	DOLLARTREE	3 - SUPP & SVC	Disinfectant Wipes for COVID disinfection	Accepted	12.00	12.00		
Jefferson County	3/12/2020	WAL-MART #3499	3 - SUPP & SVC	Ammonia All Purpose Cleaner and Multi fold paper towels for COVID disinfection	Accepted	5.90	5.90		
Jefferson County	3/9/2020	DOLLAR TREE	3 - SUPP & SVC	Hand Sanitizer for COVID disinfection	Accepted	72.00	72.00		
Jefferson County	3/9/2020	AMZN MKTP US*MB96081A2	3 - SUPP & SVC	Stylus Pens for Universal Touch Screen Devices (Expressvote) elections. Voters were provided a new stylus pen to use	Accepted	212.68	212.68		
						\$	142,339.03	\$	141,632.66

**JEFFERSON COUNTY
CARES Unbilled June-July 2020**

Account	Org	Dept	Period	Date	Source	Amount	Ref	Vendor	Description
11101 521219 22101 Other Professional Serv	11101	Admin	6	6/3/2020	API	1,405.80	VND	HOUGH	SHANNON GAYLE
11102 531312 22101 Office Supplies	11102	CJCC	6	6/30/2020	API	750.00	VND	ALCOPRO INC	CJCC Supplies - COVID-19
11102 531312 22101 Office Supplies	11102	CJCC	6	6/30/2020	API	450.00	VND	ALCOPRO INC	CJCC SUPPLIES
11201 535344 22101 Household & Janitorial Supp	11201	CentSvc	6	6/30/2020	API	179.40	VND	SCHILLING SUPPLY CO	Lysol disinfectant spray.
11201 535344 22101 Household & Janitorial Supp	11201	CentSvc	6	6/30/2020	API	508.80	VND	NASSCO INC	BRUTAB 65 SANITIZER TABLETS.
11201 535344 22101 Household & Janitorial Supp	11201	CentSvc	6	6/30/2020	API	115.72	VND	NASSCO INC	BRUTE 32 GALLON CONTAINERS.
11201 535344 22101 Household & Janitorial Supp	11201	CentSvc	6	6/30/2020	API	449.64	VND	NASSCO INC	23 GALLON SLIMJIM RECYCLING CO
11201 535344 22101 Household & Janitorial Supp	11201	CentSvc	6	6/30/2020	API	36.00	VND	NASSCO INC	MICROFIBER CLOTHS 16X16
11201 535344 22101 Household & Janitorial Supp	11201	CentSvc	7	7/21/2020	API	450.00	VND	CC & E BUILDING & RE	Fabricated sneeze guard sheilds
11201 535344 22101 Household & Janitorial Supp	11201	CentSvc	7	7/24/2020	API	75,940.00	VND	C3 GREEN ENERGY LLC	Antimicrobial Biostatic Surfac
11201 594822 22101 Capital Improvement Building	11201	CentSvc	7	7/24/2020	API	3,994.00	VND	SERVPRO OF SOUTH	Clean duct work at Activity Ce
11401 531310 22101 Postage Special	11401	COC	6	6/30/2020	API	712.64	VND	UNITED MAILING SERVI	JUNE POSTAGE
11404 531311 22101 Postage & Box Rent	11404	COC	6	6/30/2020	API	92.27	VND	UNITED MAILING SERVI	JUNE POSTAGE
11405 531311 22101 Postage & Box Rent	11405	COC	6	6/30/2020	API	50.49	VND	UNITED MAILING SERVI	JUNE POSTAGE
11408 531311 22101 Postage & Box Rent	11408	COC	6	6/30/2020	API	12.37	VND	UNITED MAILING SERVI	JUNE POSTAGE
11801 531243 22101 Furniture & Furnishings	11801	DA	6	6/30/2020	API	217.53	VND	AMAZON.COM INC	Black Plastic Chairs to replac
11801 531243 22101 Furniture & Furnishings	11801	DA	6	6/30/2020	API	359.94	VND	AMAZON.COM INC	Black leather chairs to replac
11801 531312 22101 Office Supplies	11801	DA	6	6/30/2020	API	26.54	VND	WAL-MART #3499	Sanitizer wipes
12001 521219 22101 Other Professional Serv	12001	EM	6	6/25/2020	API	375.00	VND	DOUBLE THREE TRANSP	SCHOOL BUS DRIVING TO WTTN HOS
12001 531320 22101 Safety Supplies	12001	EM	6	6/25/2020	API	2,075.06	VND	W.S. DARLEY & CO	MASKS - SURG/PROC
12001 531320 22101 Safety Supplies	12001	EM	6	6/25/2020	API	2,016.65	VND	W.S. DARLEY & CO	MASKS - SURG/PROC
12301 521219 22101 Other Professional Serv	12301	HR	7	7/1/2020	API	100.00	VND	PENFIELD-CRUZ	JESSI
12301 531320 22101 Safety Supplies	12301	HR	6	6/30/2020	API	10,158.12	VND	AMAZON.COM INC	58 OF ALPHA PRO TECH N-95 PART
12301 531320 22101 Safety Supplies	12301	HR	6	6/30/2020	API	92.97	VND	AMAZON.COM INC	Cloth face masks
12301 531320 22101 Safety Supplies	12301	HR	6	6/30/2020	API	200.00	VND	NATIONAL EVERYTHING	Hand Sanitizer - Gal not yet d
12301 531320 22101 Safety Supplies	12301	HR	6	6/30/2020	API	370.29	VND	NATIONAL EVERYTHING	Purell sanitizer dispensers- n
12301 531320 22101 Safety Supplies	12301	HR	6	6/30/2020	API	22.90	VND	AMAZON.COM INC	Cellophane bags for mask distr
12301 531320 22101 Safety Supplies	12301	HR	6	6/30/2020	API	(230.95)	VND	AMAZON.COM INC	Return disposable gosns
12301 531320 22101 Safety Supplies	12301	HR	6	6/30/2020	API	(230.94)	VND	AMAZON.COM INC	Return disposable gowns
12301 531320 22101 Safety Supplies	12301	HR	6	6/30/2020	API	(230.95)	VND	AMAZON.COM INC	Return disposable gosns
12301 531320 22101 Safety Supplies	12301	HR	6	6/30/2020	API	(230.95)	VND	AMAZON.COM INC	Return disposable gosns
12301 531320 22101 Safety Supplies	12301	HR	6	6/30/2020	API	(230.95)	VND	AMAZON.COM INC	Return disposable gosns
12301 531320 22101 Safety Supplies	12301	HR	6	6/30/2020	API	119.98	VND	AMAZON.COM INC	Hand Soap
12301 531320 22101 Safety Supplies	12301	HR	6	6/30/2020	API	(119.98)	VND	AMAZON.COM INC	Return hand soap
12301 531320 22101 Safety Supplies	12301	HR	6	6/30/2020	API	35.50	VND	AMAZON.COM INC	pumps for gallon sanitizer
12301 531320 22101 Safety Supplies	12301	HR	6	6/30/2020	API	537.73	VND	AMAZON.COM INC	Sneeze guards
12301 531320 22101 Safety Supplies	12301	HR	6	6/30/2020	API	1,550.98	VND	DGS RETAIL	Sneeze guards - refunded expec
12301 531320 22101 Safety Supplies	12301	HR	6	6/30/2020	API	(851.85)	VND	AMAZON.COM INC	Refund sneeze guards
12301 531320 22101 Safety Supplies	12301	HR	6	6/30/2020	API	129.98	VND	QUILL CORPORATION	Purell 1905-02 dispensing unit
12301 531320 22101 Safety Supplies	12301	HR	6	6/30/2020	API	126.58	VND	WAL-MART #3499	Children masks
12301 531320 22101 Safety Supplies	12301	HR	6	6/30/2020	API	(368.02)	VND	AMAZON.COM INC	refund on disposable gowns
12301 531320 22101 Safety Supplies	12301	HR	6	6/30/2020	API	(368.02)	VND	AMAZON.COM INC	refund on disposable gowns
12301 531320 22101 Safety Supplies	12301	HR	6	6/30/2020	API	(368.02)	VND	AMAZON.COM INC	refund on disposable gowns
12301 531320 22101 Safety Supplies	12301	HR	6	6/30/2020	API	(368.02)	VND	AMAZON.COM INC	refund on disposable gowns
12301 531320 22101 Safety Supplies	12301	HR	6	6/30/2020	API	(368.02)	VND	AMAZON.COM INC	refund on disposable gowns
12301 531320 22101 Safety Supplies	12301	HR	6	6/30/2020	API	(368.02)	VND	AMAZON.COM INC	refund on disposable gowns
12301 531320 22101 Safety Supplies	12301	HR	6	6/30/2020	API	(368.02)	VND	AMAZON.COM INC	refund on disposable gowns
12301 531320 22101 Safety Supplies	12301	HR	6	6/30/2020	API	(368.02)	VND	AMAZON.COM INC	refund on disposable gowns
12301 531320 22101 Safety Supplies	12301	HR	6	6/30/2020	API	(368.02)	VND	AMAZON.COM INC	refund on disposable gowns
12301 531320 22101 Safety Supplies	12301	HR	6	6/30/2020	API	(368.02)	VND	AMAZON.COM INC	refund on disposable gowns
12301 531320 22101 Safety Supplies	12301	HR	6	6/30/2020	API	(184.01)	VND	AMAZON.COM INC	refund on disposable gowns

JEFFERSON COUNTY
CARES Unbilled June-July 2020

12301 531320 22101 Safety Supplies	12301	HR	6	6/30/2020	API	(230.95)	VND	AMAZON.COM INC	Return disposable gosns
12301 531320 22101 Safety Supplies	12301	HR	6	6/30/2020	API	(230.95)	VND	AMAZON.COM INC	Return disposable gosns
12301 531320 22101 Safety Supplies	12301	HR	6	6/30/2020	API	(230.95)	VND	AMAZON.COM INC	Return disposable gowns
12301 531320 22101 Safety Supplies	12301	HR	6	6/30/2020	API	(230.94)	VND	AMAZON.COM INC	Return disposable gowns
12301 531320 22101 Safety Supplies	12301	HR	6	6/30/2020	API	(230.95)	VND	AMAZON.COM INC	Return disposable gowns
12301 531320 22101 Safety Supplies	12301	HR	6	6/30/2020	API	375.00	VND	AMAZON.COM INC	Disinfectant Caviwipes
12301 531320 22101 Safety Supplies	12301	HR	6	6/30/2020	API	5,254.20	VND	AMAZON.COM INC	N-95 masks
12301 531320 22101 Safety Supplies	12301	HR	6	6/30/2020	API	969.60	VND	AMAZON.COM INC	Children's disposable masks
12301 531320 22101 Safety Supplies	12301	HR	6	6/30/2020	API	969.60	VND	AMAZON.COM INC	children's disposable masks
12301 531320 22101 Safety Supplies	12301	HR	6	6/30/2020	API	175.93	VND	AMAZON.COM INC	Disposable gowns
12301 531320 22101 Safety Supplies	12301	HR	6	6/30/2020	API	4,600.25	VND	AMAZON.COM INC	disposable gowns
12301 531320 22101 Safety Supplies	12301	HR	6	6/30/2020	API	1,759.73	VND	AMAZON.COM INC	sneeze guards
12301 531320 22101 Safety Supplies	12301	HR	6	6/30/2020	API	64.58	VND	AMAZON.COM INC	Sneeze guard partitions
12301 531320 22101 Safety Supplies	12301	HR	6	6/30/2020	API	2,309.48	VND	AMAZON.COM INC	Disposable gownsq
12301 531320 22101 Safety Supplies	12301	HR	6	6/30/2020	API	61.90	VND	AMAZON.COM INC	Vinyl Paper for Covid signs
12301 531320 22101 Safety Supplies	12301	HR	6	6/30/2020	API	885.00	VND	AMAZON.COM INC	Disposable masks
12301 531320 22101 Safety Supplies	12301	HR	6	6/30/2020	API	1,789.83	VND	AMAZON.COM INC	disposable gowns
12301 531320 22101 Safety Supplies	12301	HR	6	6/30/2020	API	1,038.00	VND	AMAZON.COM INC	Disposable masks
12301 531320 22101 Safety Supplies	12301	HR	6	6/30/2020	API	45.00	VND	PAYPAL	Inventory tracker spreadsheet
12801 535349 22101 Other Supplies	12801	Parks	6	6/19/2020	API	38.00	VND	JEFFERSON GLASS INC	PARK OFFICE COVID SCREEN
13001 531313 22101 Printing & Duplicating	13001	ROD	6	6/30/2020	GNI	5.14	REF		
13106 531265 22101 Electronic Monitoring	13106	Sheriff	6	6/29/2020	API	2,317.50	VND	SATELLITE TRACKING O	GPS & Sobertrack Units 5/1-5/3
13106 531265 22101 Electronic Monitoring	13106	Sheriff	6	6/30/2020	API	1,606.25	VND	SATELLITE TRACKING O	GPS & Sobertrack Units 6/1-6/3
13106 531314 22101 Small Items Of Equipment	13106	Sheriff	6	6/30/2020	API	39.90	VND	WAL-MART	Batteries for Skytron UV Robot
13401 533225 22101 Telephone & Fax	13401	UWX	6	6/22/2020	API	81.69	VND	U S CELLULAR CHICAGO	853558620 VETERANS PHONE
13401 533225 22101 Telephone & Fax	13401	UWX	7	7/20/2020	API	102.63	VND	U S CELLULAR CHICAGO	853558620 VETS
61690987 531319 22101 Other Operating Supplies	61690	HS	6	6/30/2020	API	74.43	VND	NASSCO INC	Nassco cleaning supplies
61690987 531319 22101 Other Operating Supplies	61690	HS	6	6/30/2020	API	30.36	VND	NASSCO INC	Nassco cleaning supplies
61690987 533225 22101 Telephone & Fax	61690	HS	6	6/18/2020	GEN	797.84	REF		
61690987 535360 22101 Repair & Maintenance	61690	HS	6	6/24/2020	API	138.00	VND	JEFFERSON GLASS INC	PLEXIGLASS AT WDC
53214 531562 22101 DP Highway Materials	53214	HWY	6	6/17/2020	API	47.64	VND		
53214 531562 22101 DP Highway Materials	53214	HWY	6	6/17/2020	API	14.10	VND		
53214 544534 22101 Machinery Rental	53214	HWY	6	6/1/2020	GNI	220.35	REF		
77001 531303 22101 Computer Equipmt & Software	77001	MIS	6	6/3/2020	API	69.64	VND		
77004 533236 22101 Wireless Internet	77004	MIS	6	6/18/2020	API	621.68	VND		
77004 533236 22101 Wireless Internet	77004	MIS	7	7/20/2020	API	716.65	VND		
Total						123,001.22			

JEFFERSON COUNTY
 CARES Funding update
 Through July 31, 2020

*** does not include July p-card transactions or wage and benefit costs, other than Health Dept estimate**

<u>Project</u>	<u>Vendor</u>	<u>Estimated Amount</u>
Clean ductwork courthouse	Dirty Ducts	\$ 31,600.00
Clean ductwork jail	Dirty Ducts	54,550.00
Clean ductwork Activity Center	Dirty Ducts	4,000.00
Clean ductwork South Campus	ServPro	85,000.00
Air handling ionizers	Johnson Controls	75,000.00
Courtroom plexiglass	Jefferson Glass	25,000.00
Air conditioning Fair Park		100,000.00
Freezer - Medical Examiner		10,000.00
F5 Projection tool	Forecast5	18,000.00
Zencity	Zencity	?
Office 365	Microsoft	4,500.00
Cisco home phone module	Cisco	?
Additional laptops Windows 7 replacements	Microsoft	-
Licenses for dual authentication	SHI	7,404.00
MIFI	Verizon	?
Health department nursing (staff)	Jefferson County	84,843.31
Electronic monitoring - Huber	WCS	<u>90,000.00</u>
Total remaining estimated expenses		589,897.31
Total billed through May		141,632.66
Total unbilled June-July		<u>123,001.22</u>
Total CARES encumbered		854,531.19
Total CARES funding		<u>1,375,046.00</u>
Amount available		<u><u>\$ 520,514.81</u></u>

08/10/2020
11:26:19

Jefferson County
FLEXIBLE PERIOD REPORT

FROM 2020 01 TO 2020 06

ACCOUNTS FOR:	ORIGINAL APPROP	TRANFRS/ ADJSTMTS	REVISED BUDGET	ACTUALS	ENCUMBRANCES	AVAILABLE BUDGET	PCT USED
100 General Fund							
<hr/>							
12201 Finance							
12201 411100 General Property Taxes	-496,515	0	-496,515	-248,257.50	.00	-248,257.50	50.0%
12201 412100 Sales Taxes From County	-150	0	-150	-63.68	.00	-86.32	42.5%
12201 451004 Garnishment Fees	-30	0	-30	-30.00	.00	.00	100.0%
12201 451005 Child Support Fees	-1,000	0	-1,000	-372.00	.00	-628.00	37.2%
12201 451312 Emp Payroll Charges	-130	0	-130	-76.00	.00	-54.00	58.5%
12201 474201 Fax Interdepartment	0	0	0	.00	.00	.00	.0%
12201 699992 Balance Forward Prior Year	0	0	0	.00	.00	.00	.0%
12201 699999 Budgetary Fund Balance	0	-85,000	-85,000	.00	.00	-85,000.00	.0%
12202 Dental Insurance Allocation							
12202 451026 Retiree Ins Premium Recovery	-15,000	0	-15,000	-6,690.83	.00	-8,309.17	44.6%
12202 451032 Cobra Premium Recovery	-2,600	0	-2,600	-1,664.91	.00	-935.09	64.0%
12202 451043 County Board Premiums	0	0	0	-1,176.04	.00	1,176.04	.0%
12202 451045 Employee Premiums	-470,000	0	-470,000	-262,616.17	.00	-207,383.83	55.9%
12202 699999 Budgetary Fund Balance	0	0	0	.00	.00	.00	.0%
TOTAL General Fund	-985,425	-85,000	-1,070,425	-520,947.13	.00	-549,477.87	48.7%
TOTAL REVENUES	-985,425	-85,000	-1,070,425	-520,947.13	.00	-549,477.87	

08/10/2020
11:28:27

Jefferson County
FLEXIBLE PERIOD REPORT

PAGE 1
gflfxrpt

FROM 2020 01 TO 2020 06

ACCOUNTS FOR:	ORIGINAL	TRANFRS/	REVISED	ACTUALS	ENCUMBRANCES	AVAILABLE	PCT
100 General Fund	APPROP	ADJSTMTS	BUDGET			BUDGET	USED
<hr/>							
12201 Finance							
12201 511110 Salary-Permanent Regular	195,727	0	195,727	96,595.31	.00	99,131.20	49.4%
12201 511110 22101 Salary-Permanent Regula	0	0	0	185.09	.00	-185.09	.0%
12201 511210 Wages-Regular	143,861	0	143,861	71,212.96	.00	72,648.25	49.5%
12201 511210 22101 Wages-Regular	0	0	0	1,097.04	.00	-1,097.04	.0%
12201 511220 Wages-Overtime	0	0	0	572.64	.00	-572.64	.0%
12201 511310 Wages-Sick Leave	0	0	0	.00	.00	.00	.0%
12201 511320 Wages-Vacation Pay	0	0	0	.00	.00	.00	.0%
12201 511330 Wages-Longevity Pay	819	0	819	.00	.00	818.75	.0%
12201 511340 Wages-Holiday Pay	0	0	0	.00	.00	.00	.0%
12201 511350 Wages-Miscellaneous(Comp)	0	0	0	.00	.00	.00	.0%
12201 511380 Wages-Bereavement	0	0	0	.00	.00	.00	.0%
12201 512141 Social Security	25,446	0	25,446	12,422.05	.00	13,023.89	48.8%
12201 512141 22101 Social Security	0	0	0	90.34	.00	-90.34	.0%
12201 512142 Retirement (Employer)	22,977	0	22,977	11,366.84	.00	11,610.60	49.5%
12201 512142 22101 Retirement (Employer)	0	0	0	86.54	.00	-86.54	.0%
12201 512144 Health Insurance	43,196	0	43,196	21,237.26	.00	21,959.12	49.2%
12201 512144 22101 Health Insurance	0	0	0	361.54	.00	-361.54	.0%
12201 512145 Life Insurance	159	0	159	91.40	.00	67.36	57.6%
12201 512145 22101 Life Insurance	0	0	0	1.48	.00	-1.48	.0%
12201 512150 FSA Contribution	6,000	0	6,000	.00	.00	6,000.00	.0%
12201 512151 HSA Contribution	0	0	0	6,000.00	.00	-6,000.00	.0%
12201 512152 Limited FSA Contribution	0	0	0	.00	.00	.00	.0%
12201 512153 HRA Contribution	0	0	0	.00	.00	.00	.0%
12201 512173 Dental Insurance	4,344	0	4,344	2,154.59	.00	2,189.41	49.6%
12201 512173 22101 Dental Insurance	0	0	0	17.40	.00	-17.40	.0%
12201 521213 Accounting & Auditing	16,250	0	16,250	10,890.00	.00	5,360.00	67.0%
12201 521219 Other Professional Serv	3,650	0	3,650	1,510.00	.00	2,140.00	41.4%
12201 521296 Computer Support	3,443	0	3,443	3,085.26	.00	357.74	89.6%
12201 531003 Notary Public Related	0	0	0	.00	.00	.00	.0%
12201 531100 Permits Purchased	0	0	0	.00	.00	.00	.0%
12201 531243 Furniture & Furnishings	0	0	0	.00	.00	.00	.0%
12201 531301 Office Equipment	0	0	0	.00	.00	.00	.0%
12201 531303 Computer Equipmt & Software	550	0	550	602.00	.00	-52.00	109.5%
12201 531303 22101 Computer Equipmt & Soft	0	0	0	.00	.00	.00	.0%
12201 531311 Postage & Box Rent	2,400	0	2,400	1,203.06	.00	1,196.94	50.1%
12201 531312 Office Supplies	2,900	0	2,900	342.72	.00	2,557.28	11.8%
12201 531313 Printing & Duplicating	1,200	0	1,200	298.11	.00	901.89	24.8%
12201 531314 Small Items Of Equipment	0	0	0	.00	.00	.00	.0%

08/10/2020
11:28:27

Jefferson County
FLEXIBLE PERIOD REPORT

FROM 2020 01 TO 2020 06

ACCOUNTS FOR:	ORIGINAL APPROP	TRANFRS/ADJSTMTS	REVISED BUDGET	ACTUALS	ENCUMBRANCES	AVAILABLE BUDGET	PCT USED
100 General Fund							
12201 531321 Publication Of Legal Notice	0	0	0	.00	.00	.00	.0%
12201 531324 Membership Dues	1,060	0	1,060	690.00	.00	370.00	65.1%
12201 531326 Advertising	0	0	0	.00	.00	.00	.0%
12201 531351 Gas/Diesel	0	0	0	.00	.00	.00	.0%
12201 532325 Registration	1,270	0	1,270	875.00	.00	395.00	68.9%
12201 532332 Mileage	660	0	660	.00	.00	660.00	.0%
12201 532334 Commercial Travel	1,000	0	1,000	487.86	.00	512.14	48.8%
12201 532335 Meals	300	0	300	.00	.00	300.00	.0%
12201 532336 Lodging	3,080	0	3,080	.00	.00	3,080.00	.0%
12201 532339 Other Travel & Tolls	0	0	0	.00	.00	.00	.0%
12201 533225 Telephone & Fax	100	0	100	38.63	.00	61.37	38.6%
12201 535242 Maintain Machinery & Equip	700	0	700	302.70	.00	397.30	43.2%
12201 571004 IP Telephony Allocation	636	0	636	318.00	.00	318.00	50.0%
12201 571005 Duplicating Allocation	27	0	27	13.50	.00	13.50	50.0%
12201 571007 MIS Direct Charges	0	0	0	.00	.00	.00	.0%
12201 571009 MIS PC Group Allocation	10,040	0	10,040	5,020.02	.00	5,019.98	50.0%
12201 571010 MIS Systems Grp Alloc(ISIS)	3,494	0	3,494	1,747.02	.00	1,746.98	50.0%
12201 591519 Other Insurance	2,536	0	2,536	1,495.43	.00	1,040.58	59.0%
12201 594818 Capital Computer	0	85,000	85,000	3,073.89	.00	81,926.11	3.6%
12201 599999 Overdraft Transfer	0	0	0	.00	.00	.00	.0%
<hr/>							
12202 Dental Insurance Allocation							
12202 599951 Year End Alloc	0	0	0	.00	.00	.00	.0%
12202 599982 Retiree Dental Claims	12,000	0	12,000	5,529.50	.00	6,470.50	46.1%
12202 599984 Cobra Dental Claims	6,000	0	6,000	456.00	.00	5,544.00	7.6%
12202 599986 Administrative Fees Dental	24,000	0	24,000	12,362.52	.00	11,637.48	51.5%
12202 599989 Employee Dental Claims	444,500	0	444,500	161,010.00	.00	283,490.00	36.2%
12202 599991 IBNR Adjustment	0	0	0	.00	.00	.00	.0%
12202 599992 Administrative Dental Retiree	1,100	0	1,100	366.36	.00	733.64	33.3%
TOTAL General Fund	985,425	85,000	1,070,425	435,210.06	.00	635,214.94	40.7%
TOTAL EXPENSES	985,425	85,000	1,070,425	435,210.06	.00	635,214.94	

08/10/2020
11:29:35

Jefferson County
FLEXIBLE PERIOD REPORT

FROM 2020 01 TO 2020 06

ACCOUNTS FOR:	ORIGINAL APPROP	TRANFRS/ ADJSTMTS	REVISED BUDGET	ACTUALS	ENCUMBRANCES	AVAILABLE BUDGET	PCT USED
100 General Fund							
<hr/>							
13201 County Treasurer							
<hr/>							
13201 411100 General Property Taxes	994,368	0	994,368	497,184.00	.00	497,184.00	50.0%
13201 411300 DNR Pilot	-60,000	0	-60,000	-56,764.46	.00	-3,235.54	94.6%
13201 411500 Managed Forest	-4,000	0	-4,000	-5,384.08	.00	1,384.08	134.6%
13201 418100 Interest On Taxes	-300,000	0	-300,000	-141,546.97	.00	-158,453.03	47.2%
13201 441030 Ag Use Conversion Penalty	-12,000	0	-12,000	-6,777.37	.00	-5,222.63	56.5%
13201 451007 Treasurers Fees	-400	0	-400	-200.00	.00	-200.00	50.0%
13201 481001 Interest & Dividends	-850,000	0	-850,000	-474,875.96	.00	-375,124.04	55.9%
13201 481004 Fair Market Value Adjustment	0	0	0	-261,664.79	.00	261,664.79	.0%
13201 486004 Miscellaneous Revenue	0	0	0	-25.00	.00	25.00	.0%
13202 Tax Deed Expense							
<hr/>							
13202 411100 General Property Taxes	4,900	0	4,900	2,449.98	.00	2,450.02	50.0%
13202 451030 Foreclosure Reimbursement	0	0	0	-165.00	.00	165.00	.0%
13202 482002 Rent Of County Property	-10,000	0	-10,000	.00	.00	-10,000.00	.0%
13202 483005 Gain/Loss-Sale Forclosed Prpt	-25,000	0	-25,000	.00	.00	-25,000.00	.0%
13203 Plat Books							
<hr/>							
13203 451010 Sale Of Maps & Plat Books	-2,250	0	-2,250	-454.95	.00	-1,795.05	20.2%
13203 451308 Postage Fees	-50	0	-50	-24.00	.00	-26.00	48.0%
TOTAL General Fund	-264,432	0	-264,432	-448,248.60	.00	183,816.60	169.5%
TOTAL REVENUES	-264,432	0	-264,432	-448,248.60	.00	183,816.60	

08/10/2020
11:30:19

Jefferson County
FLEXIBLE PERIOD REPORT

PAGE 1
glflxprt

FROM 2020 01 TO 2020 06

ACCOUNTS FOR:	ORIGINAL APPROP	TRANFRS/ ADJSTMTS	REVISED BUDGET	ACTUALS	ENCUMBRANCES	AVAILABLE BUDGET	PCT USED
100 General Fund							
<hr/>							
13201 County Treasurer							
13201 511110 Salary-Permanent Regular	71,200	0	71,200	35,627.71	.00	35,572.74	50.0%
13201 511210 Wages-Regular	48,098	0	48,098	19,248.49	.00	28,849.49	40.0%
13201 511220 Wages-Overtime	0	0	0	680.81	.00	-680.81	.0%
13201 511220 22101 Wages-Overtime	0	0	0	7.02	.00	-7.02	.0%
13201 511330 Wages-Longevity Pay	104	0	104	.00	.00	104.40	.0%
13201 512141 Social Security	8,678	0	8,678	3,953.96	.00	4,723.77	45.6%
13201 512141 22101 Social Security	0	0	0	.54	.00	-.54	.0%
13201 512142 Retirement (Employer)	8,060	0	8,060	3,750.10	.00	4,309.61	46.5%
13201 512142 22101 Retirement (Employer)	0	0	0	.47	.00	-.47	.0%
13201 512144 Health Insurance	32,397	0	32,397	12,093.63	.00	20,303.58	37.3%
13201 512145 Life Insurance	93	0	93	4.21	.00	88.31	4.6%
13201 512150 FSA Contribution	4,200	0	4,200	.00	.00	4,200.00	.0%
13201 512151 HSA Contribution	0	0	0	2,893.75	.00	-2,893.75	.0%
13201 512173 Dental Insurance	2,318	0	2,318	858.26	.00	1,460.14	37.0%
13201 521232 Investment Advisor Fees	30,000	0	30,000	15,139.65	.00	14,860.35	50.5%
13201 531298 United Parcel Service	100	0	100	.00	.00	100.00	.0%
13201 531303 Computer Equipmt & Software	300	0	300	.00	.00	300.00	.0%
13201 531311 Postage & Box Rent	8,000	0	8,000	3,273.03	.00	4,726.97	40.9%
13201 531312 Office Supplies	1,000	0	1,000	197.65	.00	802.35	19.8%
13201 531313 Printing & Duplicating	200	0	200	192.64	.00	7.36	96.3%
13201 531314 Small Items Of Equipment	300	0	300	.00	.00	300.00	.0%
13201 531321 Publication Of Legal Notice	3,000	0	3,000	.00	.00	3,000.00	.0%
13201 531324 Membership Dues	100	0	100	100.00	.00	.00	100.0%
13201 531326 Advertising	500	0	500	.00	.00	500.00	.0%
13201 532325 Registration	300	0	300	.00	.00	300.00	.0%
13201 532332 Mileage	350	0	350	.00	.00	350.00	.0%
13201 532335 Meals	35	0	35	.00	.00	35.00	.0%
13201 532336 Lodging	400	0	400	.00	.00	400.00	.0%
13201 533225 Telephone & Fax	100	0	100	30.89	.00	69.11	30.9%
13201 535242 Maintain Machinery & Equip	200	0	200	194.95	.00	5.05	97.5%
13201 571004 IP Telephony Allocation	508	0	508	253.98	.00	254.02	50.0%
13201 571005 Duplicating Allocation	127	0	127	63.48	.00	63.52	50.0%
13201 571009 MIS PC Group Allocation	7,398	0	7,398	3,699.00	.00	3,699.00	50.0%
13201 571010 MIS Systems Grp Alloc(ISIS)	1,557	0	1,557	778.50	.00	778.50	50.0%
13201 591519 Other Insurance	909	0	909	524.55	.00	384.05	57.7%
13201 593256 Bank Charges	1,500	0	1,500	625.00	.00	875.00	41.7%
<hr/>							
13202 Tax Deed Expense							
13202 521212 Legal	100	0	100	.00	.00	100.00	.0%

08/10/2020
11:30:19

Jefferson County
FLEXIBLE PERIOD REPORT

FROM 2020 01 TO 2020 06

ACCOUNTS FOR: 100 General Fund	ORIGINAL APPROP	TRANFRS/ ADJSTMTS	REVISED BUDGET	ACTUALS	ENCUMBRANCES	AVAILABLE BUDGET	PCT USED
13202 521219 Other Professional Serv	1,200	0	1,200	.00	.00	1,200.00	.0%
13202 521255 Paper Service	1,000	0	1,000	.00	.00	1,000.00	.0%
13202 521273 Title Search	5,000	0	5,000	-1,335.00	.00	6,335.00	26.7%
13202 529299 Purchase Care & Services	2,000	0	2,000	.00	.00	2,000.00	.0%
13202 531311 Postage & Box Rent	700	0	700	.00	.00	700.00	.0%
13202 531313 Printing & Duplicating	100	0	100	.00	.00	100.00	.0%
13202 531321 Publication Of Legal Notice	7,000	0	7,000	.00	.00	7,000.00	.0%
13202 531326 Advertising	5,000	0	5,000	.00	.00	5,000.00	.0%
13202 533221 Water	3,000	0	3,000	391.44	.00	2,608.56	13.0%
13202 593742 Uncollected Taxes	5,000	0	5,000	693.23	.00	4,306.77	13.9%
<hr/>							
13203 Plat Books							
<hr/>							
13203 531349 Other Operating Expenses	2,300	0	2,300	.00	.00	2,300.00	.0%
TOTAL General Fund	264,432	0	264,432	103,941.94	.00	160,490.06	39.3%
TOTAL EXPENSES	264,432	0	264,432	103,941.94	.00	160,490.06	

08/10/2020
11:24:27

Jefferson County
FLEXIBLE PERIOD REPORT

FROM 2020 01 TO 2020 06

ACCOUNTS FOR:	ORIGINAL APPROP	TRANFRS/ ADJSTMTS	REVISED BUDGET	ACTUALS	ENCUMBRANCES	AVAILABLE BUDGET	PCT USED
100 General Fund							
<hr/>							
11301 Child Support							
11301 411100 General Property Taxes	-108,206	0	-108,206	-54,103.02	.00	-54,102.98	50.0%
11301 421001 State Aid	-113,863	0	-113,863	-56,931.00	.00	-56,932.00	50.0%
11301 421010 M S L Incentives	-15,000	0	-15,000	-5,370.00	.00	-9,630.00	35.8%
11301 421011 State Aid Cs + Lab	0	0	0	.00	.00	.00	.0%
11301 421012 State Aid Cs + All Others	-772,689	0	-772,689	-222,143.39	.00	-550,545.52	28.7%
11301 421013 Other Dept Wage Retention	0	0	0	.00	.00	.00	.0%
11301 421014 State Aid Wages Allocation	110,598	0	110,598	26,207.05	.00	84,390.95	23.7%
11301 421038 Cs Indirect Cost	0	0	0	.00	.00	.00	.0%
11301 421050 CS Performance Based Inc	-163,938	0	-163,938	.00	.00	-163,938.00	.0%
11301 421058 State Aid - Prior Year	0	0	0	.00	.00	.00	.0%
11301 421096 State Aid Medical Support	-8,000	0	-8,000	.00	.00	-8,000.00	.0%
11301 421097 State Aid E-filing	-19,716	0	-19,716	.00	.00	-19,716.00	.0%
11301 442004 Extradition Reimbursement	-1,000	0	-1,000	-1,430.06	.00	430.06	143.0%
11301 451011 CS Prog Fee Reduce 66%	7,920	0	7,920	3,113.00	.00	4,807.00	39.3%
11301 451013 NIVD Activities Reduction	-2,000	0	-2,000	-774.30	.00	-1,225.70	38.7%
11301 451014 CS Program Fees	-11,000	0	-11,000	-8,021.31	.00	-2,978.69	72.9%
11301 455003 Non-IVD Service Fees	-1,400	0	-1,400	-665.00	.00	-735.00	47.5%
11301 455021 Genetic Test Fee	0	0	0	.00	.00	.00	.0%
11301 486003 Non-Govt Reimbursements	0	0	0	.00	.00	.00	.0%
11301 699992 Balance Forward Prior Year	0	0	0	.00	.00	.00	.0%
11301 699999 Budgetary Fund Balance	0	-6,859	-6,859	.00	.00	-6,859.00	.0%
TOTAL General Fund	-1,098,294	-6,859	-1,105,153	-320,118.03	.00	-785,034.88	29.0%
TOTAL REVENUES	-1,098,294	-6,859	-1,105,153	-320,118.03	.00	-785,034.88	

08/10/2020
11:25:21

Jefferson County
FLEXIBLE PERIOD REPORT

PAGE 1
gflfxrpt

FROM 2020 01 TO 2020 06

ACCOUNTS FOR:	ORIGINAL	TRANFRS/	REVISED	ACTUALS	ENCUMBRANCES	AVAILABLE	PCT
100 General Fund	APPROP	ADJSTMTS	BUDGET			BUDGET	USED
<hr/>							
11301 Child Support							
11301 511110 Salary-Permanent Regular	259,633	0	259,633	129,289.90	.00	130,343.58	49.8%
11301 511210 Wages-Regular	459,406	0	459,406	226,395.11	.00	233,011.09	49.3%
11301 511220 Wages-Overtime	5,753	0	5,753	995.89	.00	4,756.98	17.3%
11301 511230 Wages-Regular Overtime	0	0	0	.00	.00	.00	.0%
11301 511240 Wages-Temporary	0	0	0	.00	.00	.00	.0%
11301 511310 Wages-Sick Leave	0	0	0	.00	.00	.00	.0%
11301 511320 Wages-Vacation Pay	0	0	0	.00	.00	.00	.0%
11301 511330 Wages-Longevity Pay	1,846	0	1,846	.00	.00	1,846.25	.0%
11301 511340 Wages-Holiday Pay	0	0	0	.00	.00	.00	.0%
11301 511350 Wages-Miscellaneous(Comp)	0	0	0	.00	.00	.00	.0%
11301 511380 Wages-Bereavement	0	0	0	.00	.00	.00	.0%
11301 512141 Social Security	54,216	0	54,216	26,433.70	.00	27,782.77	48.8%
11301 512142 Retirement (Employer)	49,048	0	49,048	24,075.77	.00	24,972.32	49.1%
11301 512144 Health Insurance	125,418	0	125,418	73,571.69	.00	51,846.41	58.7%
11301 512145 Life Insurance	275	0	275	146.71	.00	127.87	53.4%
11301 512146 Workers Compensation	0	0	0	.00	.00	.00	.0%
11301 512148 Unemployment Compensation	0	0	0	.00	.00	.00	.0%
11301 512150 FSA Contribution	14,600	0	14,600	.00	.00	14,600.00	.0%
11301 512151 HSA Contribution	0	0	0	17,800.00	.00	-17,800.00	.0%
11301 512152 Limited FSA Contribution	0	0	0	.00	.00	.00	.0%
11301 512153 HRA Contribution	0	0	0	.00	.00	.00	.0%
11301 512173 Dental Insurance	10,159	0	10,159	5,633.49	.00	4,525.71	55.5%
11301 521251 Transcripts	0	0	0	.00	.00	.00	.0%
11301 521253 Blood Tests	0	0	0	.00	.00	.00	.0%
11301 521255 Paper Service	11,000	0	11,000	5,866.50	.00	5,133.50	53.3%
11301 521256 Genetic Tests	6,000	0	6,000	2,530.00	.00	3,470.00	42.2%
11301 521296 Computer Support	2,339	0	2,339	1,574.83	.00	764.17	67.3%
11301 529160 Interpreter Fee	5,183	0	5,183	1,296.00	.00	3,887.00	25.0%
11301 529299 Purchase Care & Services	0	0	0	.00	.00	.00	.0%
11301 531003 Notary Public Related	0	0	0	.00	.00	.00	.0%
11301 531246 FPLS Fees	0	0	0	.00	.00	.00	.0%
11301 531298 United Parcel Service	0	0	0	.00	.00	.00	.0%
11301 531301 Office Equipment	0	0	0	.00	.00	.00	.0%
11301 531303 Computer Equipmt & Software	2,100	0	2,100	2,204.99	.00	-104.99	105.0%
11301 531310 Postage Special	300	0	300	85.96	.00	214.04	28.7%
11301 531311 Postage & Box Rent	16,900	0	16,900	8,840.80	.00	8,059.20	52.3%
11301 531312 Office Supplies	2,500	0	2,500	551.58	.00	1,948.42	22.1%
11301 531313 Printing & Duplicating	2,300	0	2,300	2,483.74	.00	-183.74	108.0%

08/10/2020
11:25:21

Jefferson County
FLEXIBLE PERIOD REPORT

FROM 2020 01 TO 2020 06

ACCOUNTS FOR:	ORIGINAL APPROP	TRANFRS/ADJSTMTS	REVISED BUDGET	ACTUALS	ENCUMBRANCES	AVAILABLE BUDGET	PCT USED
100 General Fund							
11301 531314 Small Items Of Equipment	1,200	0	1,200	148.21	.00	1,051.79	12.4%
11301 531321 Publication Of Legal Notice	1,100	0	1,100	327.00	.00	773.00	29.7%
11301 531323 Subscriptions-Tax & Law	2,334	0	2,334	972.50	.00	1,361.62	41.7%
11301 531324 Membership Dues	1,872	0	1,872	1,662.00	.00	210.00	88.8%
11301 531326 Advertising	0	0	0	.00	.00	.00	.0%
11301 531348 Educational Supplies	450	0	450	217.04	.00	232.96	48.2%
11301 531351 Gas/Diesel	0	0	0	.00	.00	.00	.0%
11301 532325 Registration	2,740	6,859	9,599	2,525.00	.00	7,074.00	26.3%
11301 532332 Mileage	800	0	800	.00	.00	800.00	.0%
11301 532334 Commercial Travel	1,200	0	1,200	.00	.00	1,200.00	.0%
11301 532335 Meals	800	0	800	41.91	.00	758.09	5.2%
11301 532336 Lodging	3,083	0	3,083	-9.02	.00	3,092.02	.3%
11301 532339 Other Travel & Tolls	300	0	300	16.80	.00	283.20	5.6%
11301 532340 Contracted Extraditions	9,750	0	9,750	2,479.53	.00	7,270.47	25.4%
11301 533225 Telephone & Fax	450	0	450	208.73	.00	241.27	46.4%
11301 535242 Maintain Machinery & Equip	3,600	0	3,600	1,452.84	.00	2,147.16	40.4%
11301 571004 IP Telephony Allocation	2,034	0	2,034	1,017.00	.00	1,017.00	50.0%
11301 571005 Duplicating Allocation	208	0	208	103.98	.00	104.02	50.0%
11301 571007 MIS Direct Charges	0	0	0	.00	.00	.00	.0%
11301 571009 MIS PC Group Allocation	23,251	0	23,251	11,625.48	.00	11,625.52	50.0%
11301 571010 MIS Systems Grp Alloc(ISIS)	8,628	0	8,628	4,314.00	.00	4,314.00	50.0%
11301 591519 Other Insurance	5,517	0	5,517	3,192.18	.00	2,324.37	57.9%
11301 594813 Capital Office Equip	0	0	0	.00	.00	.00	.0%
TOTAL General Fund	1,098,294	6,859	1,105,153	560,071.84	.00	545,081.07	50.7%
TOTAL EXPENSES	1,098,294	6,859	1,105,153	560,071.84	.00	545,081.07	

JEFFERSON COUNTY
REVENUES COLLECTED THROUGH 7-31-2020 (Unadjusted)

DEPARTMENT	2020 BUDGET	2020 ACTUALS	% COLLECTED	2019 BUDGET	2019 ACTUALS	% COLLECTED	2018 BUDGET	2018 ACTUALS	% COLLECTED
Administration Total	\$ (580,556.00)	\$ (248,177.40)	42.7%	\$ (659,236.00)	\$ (339,588.41)	51.5%	\$ (659,236.00)	\$ (339,588.41)	51.5%
Capital Projects and Debt Total	(1,136,443.00)	(580,191.59)	51.1%	(1,133,342.00)	(688,730.31)	60.8%	(1,133,342.00)	(688,730.31)	60.8%
Central Services Total	(876,789.00)	(437,772.50)	49.9%	(826,213.00)	(517,812.93)	62.7%	(826,213.00)	(517,812.93)	62.7%
Child Support Total	(1,098,294.00)	(321,659.47)	29.3%	(1,146,300.00)	(561,380.95)	49.0%	(1,146,300.00)	(561,380.95)	49.0%
Clerk of Courts Total	(2,965,996.00)	(1,405,019.84)	47.4%	(2,836,315.00)	(1,589,050.73)	56.0%	(2,836,315.00)	(1,589,050.73)	56.0%
Corporation Counsel Total	(405,012.00)	(202,506.00)	50.0%	(384,764.00)	(224,445.69)	58.3%	(384,764.00)	(224,445.69)	58.3%
County Board Total	(426,226.00)	(213,208.99)	50.0%	(433,373.00)	(252,800.94)	58.3%	(433,373.00)	(252,800.94)	58.3%
County Clerk Total	(389,113.00)	(177,370.05)	45.6%	(376,461.00)	(236,628.76)	62.9%	(376,461.00)	(236,628.76)	62.9%
District Attorney Total	(838,288.00)	(385,842.35)	46.0%	(822,021.00)	(473,634.60)	57.6%	(822,021.00)	(473,634.60)	57.6%
Economic Development Total	(498,223.00)	(308,023.00)	61.8%	(472,560.00)	(435,177.51)	92.1%	(472,560.00)	(435,177.51)	92.1%
Emergency Management Total	(2,383,672.00)	(47,149.02)	2.0%	(199,579.00)	(52,579.31)	26.3%	(199,579.00)	(52,579.31)	26.3%
Fair Park Total	(1,359,680.00)	(162,885.49)	12.0%	(1,294,792.00)	(558,864.60)	43.2%	(1,294,792.00)	(558,864.60)	43.2%
Finance Department Total	(985,425.00)	(532,121.81)	54.0%	(977,955.00)	(596,860.69)	61.0%	(977,955.00)	(596,860.69)	61.0%
General Revenues & Expenditure Total	(990,005.00)	1,812,766.55	-183.1%	(1,090,584.00)	1,452,462.71	-133.2%	(1,090,584.00)	1,452,462.71	-133.2%
Health Department Total	(1,650,025.00)	(707,544.06)	42.9%	(1,468,729.00)	(718,867.99)	48.9%	(1,468,729.00)	(718,867.99)	48.9%
Highway Department Total	(11,254,363.00)	(6,047,218.30)	53.7%	(11,389,168.00)	(6,671,283.22)	58.6%	(11,389,168.00)	(6,671,283.22)	58.6%
Human Resources Total	(536,409.00)	(261,627.32)	48.8%	(525,316.00)	(306,938.16)	58.4%	(525,316.00)	(306,938.16)	58.4%
Human Services Department Total	(26,622,671.00)	(11,740,427.86)	44.1%	(25,342,356.00)	(11,919,913.24)	47.0%	(25,342,356.00)	(11,919,913.24)	47.0%
Land & Water Conservation Total	(660,696.00)	(212,459.91)	32.2%	(659,423.00)	(173,605.21)	26.3%	(659,423.00)	(173,605.21)	26.3%
Land Information Total	(607,113.00)	(341,228.26)	56.2%	(665,268.00)	(374,384.60)	56.3%	(665,268.00)	(374,384.60)	56.3%
Library Total	(1,192,912.00)	(596,455.98)	50.0%	(1,153,101.00)	(672,642.32)	58.3%	(1,153,101.00)	(672,642.32)	58.3%
Management Information Systems Total	(1,560,518.00)	(935,123.15)	59.9%	(1,401,776.00)	(819,620.03)	58.5%	(1,401,776.00)	(819,620.03)	58.5%
Medical Examiner Total	(249,121.00)	(113,375.00)	45.5%	(225,252.00)	(110,617.00)	49.1%	(225,252.00)	(110,617.00)	49.1%
Parks Department Total	(2,226,915.00)	(526,041.24)	23.6%	(2,510,192.00)	(700,302.68)	27.9%	(2,510,192.00)	(700,302.68)	27.9%
Planning And Zoning Total	(621,246.00)	(264,429.25)	42.6%	(605,251.00)	(309,815.39)	51.2%	(605,251.00)	(309,815.39)	51.2%
Register Of Deeds Total	(359,231.00)	(261,123.46)	72.7%	(334,968.00)	(220,579.03)	65.9%	(334,968.00)	(220,579.03)	65.9%
Sheriff Department Total	(14,693,282.00)	(7,298,299.42)	49.7%	(14,466,963.00)	(8,370,787.84)	57.9%	(14,466,963.00)	(8,370,787.84)	57.9%
Treasurer Total	(264,432.00)	(445,946.57)	168.6%	(241,639.00)	(738,624.36)	305.7%	(241,639.00)	(738,624.36)	305.7%
UW Extension Total	(280,356.00)	(138,619.53)	49.4%	(262,575.00)	(150,038.39)	57.1%	(262,575.00)	(150,038.39)	57.1%
Veterans Services Total	(207,207.00)	(108,770.50)	52.5%	(198,887.00)	(118,848.84)	59.8%	(198,887.00)	(118,848.84)	59.8%
Grand Total	\$ (77,920,219.00)	\$ (33,207,850.77)	42.6%	\$ (74,104,359.00)	\$ (37,451,961.02)	50.5%	\$ (74,104,359.00)	\$ (37,451,961.02)	50.5%

JEFFERSON COUNTY
EXPENDITURES THROUGH 7-31-2020 (Unadjusted)

DEPARTMENT	2020 BUDGET	2020 ACTUALS	% SPENT	2019 BUDGET	2019 ACTUALS	% SPENT	2018 BUDGET	2018 ACTUALS	% SPENT
Administration Total	\$ 580,556.00	\$ 330,979.72	57.0%	\$ 659,236.00	\$ 305,452.77	46.3%	\$ 659,236.00	\$ 305,452.77	46.3%
Capital Projects and Debt Total	1,011,634.00	(6,124,630.23)	-605.4%	1,133,342.00	956,081.70	84.4%	1,133,342.00	956,081.70	84.4%
Central Services Total	876,790.00	770,930.35	87.9%	1,151,213.00	498,599.03	43.3%	1,151,213.00	498,599.03	43.3%
Child Support Total	1,098,293.00	643,191.45	58.6%	1,146,300.00	652,815.12	56.9%	1,146,300.00	652,815.12	56.9%
Clerk of Courts Total	2,965,996.00	1,429,956.88	48.2%	2,876,315.00	1,419,372.41	49.3%	2,876,315.00	1,419,372.41	49.3%
Corporation Counsel Total	415,011.00	199,461.82	48.1%	384,764.00	262,000.97	68.1%	384,764.00	262,000.97	68.1%
County Board Total	426,225.00	205,259.47	48.2%	433,373.00	333,923.87	77.1%	433,373.00	333,923.87	77.1%
County Clerk Total	389,112.00	444,293.97	114.2%	376,461.00	418,061.74	111.1%	376,461.00	418,061.74	111.1%
District Attorney Total	838,289.00	468,631.72	55.9%	822,021.00	465,921.83	56.7%	822,021.00	465,921.83	56.7%
Economic Development Total	523,222.00	247,868.73	47.4%	472,561.00	227,424.90	48.1%	472,561.00	227,424.90	48.1%
Emergency Management Total	2,383,673.00	173,650.61	7.3%	199,579.00	114,343.74	57.3%	199,579.00	114,343.74	57.3%
Fair Park Total	1,407,178.00	397,735.54	28.3%	1,357,792.00	944,241.27	69.5%	1,357,792.00	944,241.27	69.5%
Finance Department Total	985,425.00	499,582.20	50.7%	977,955.00	538,890.01	55.1%	977,955.00	538,890.01	55.1%
General Revenues & Expenditure Total	370,357.00	906.02	0.2%	(1,337,823.00)	384,697.17	-28.8%	(1,337,823.00)	384,697.17	-28.8%
Health Department Total	1,774,826.00	986,159.03	55.6%	1,468,729.00	908,053.96	61.8%	1,468,729.00	908,053.96	61.8%
Highway Department Total	11,254,363.00	5,789,875.94	51.4%	11,389,168.00	7,955,537.85	69.9%	11,389,168.00	7,955,537.85	69.9%
Human Resources Total	543,315.00	306,642.24	56.4%	525,316.00	262,534.18	50.0%	525,316.00	262,534.18	50.0%
Human Services Department Total	26,622,677.00	13,758,032.77	51.7%	25,342,364.00	13,388,310.69	52.8%	25,342,364.00	13,388,310.69	52.8%
Land & Water Conservation Total	660,696.00	280,080.72	42.4%	659,423.00	356,363.29	54.0%	659,423.00	356,363.29	54.0%
Land Information Total	607,115.00	359,952.94	59.3%	665,268.00	503,289.51	75.7%	665,268.00	503,289.51	75.7%
Library Total	1,192,912.00	1,192,558.48	100.0%	1,153,101.00	1,152,416.45	99.9%	1,153,101.00	1,152,416.45	99.9%
Management Information Systems Tot	1,560,521.00	1,074,985.05	68.9%	1,401,776.00	999,186.37	71.3%	1,401,776.00	999,186.37	71.3%
Medical Examiner Total	249,121.00	142,915.64	57.4%	236,252.00	122,373.86	51.8%	236,252.00	122,373.86	51.8%
Parks Department Total	2,358,284.00	617,116.59	26.2%	2,998,401.00	620,674.94	20.7%	2,998,401.00	620,674.94	20.7%
Planning And Zoning Total	621,246.00	353,305.81	56.9%	635,251.00	382,762.31	60.3%	635,251.00	382,762.31	60.3%
Register Of Deeds Total	359,230.00	198,513.78	55.3%	334,968.00	205,092.72	61.2%	334,968.00	205,092.72	61.2%
Sheriff Department Total	15,099,056.00	8,726,979.55	57.8%	15,928,160.00	8,846,943.86	55.5%	15,928,160.00	8,846,943.86	55.5%
Treasurer Total	264,432.00	117,086.90	44.3%	241,639.00	118,847.77	49.2%	241,639.00	118,847.77	49.2%
UW Extension Total	280,354.00	151,087.10	53.9%	272,575.00	166,114.78	60.9%	272,575.00	166,114.78	60.9%
Veterans Services Total	207,207.00	118,027.96	57.0%	198,887.00	113,169.41	56.9%	198,887.00	113,169.41	56.9%
Grand Total	\$ 77,927,116.00	\$ 33,861,138.75	43.5%	\$ 74,104,367.00	\$ 43,623,498.48	58.9%	\$ 74,104,367.00	\$ 43,623,498.48	58.9%

**Jefferson County
Contingency Fund
For the Year Ended December 31, 2020**

Ledger Date	Description	General (599900)	Other (599908)	Vested Benefits (599909)	Authority	Publish Date
1-Jan-19	Tax Levy	625,131.00	0.00	300,000.00		
11-Feb-20	Jefferson County Law Enforcement Officers Assn.	(53,307.00)			Finance Committee	11-Feb-20
10-Mar-20	Sheriff Department vandalism reimbursement	(3,000.00)			Finance Committee	10-Mar-20
Total amount available		568,824.00	0.00	300,000.00		
Net		568,824.00	0.00	300,000.00		